

Miniature Horse Club Of Great Britain

News Review Spring Edition 2008

Kentucky's Finest...

Nostalgias
Silent Investor



Nostalgias
Six Sigma



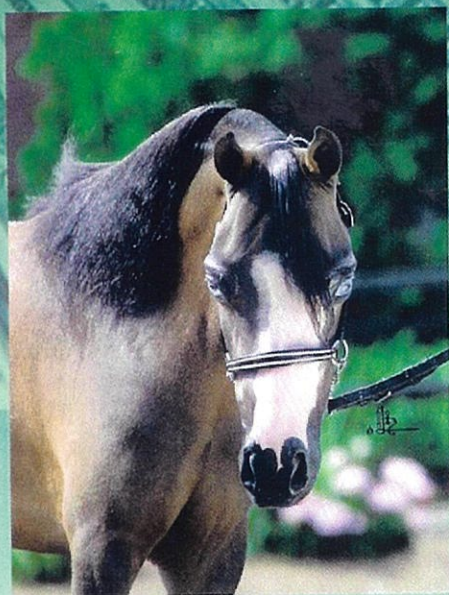
Nostalgias
Show Me The Money

NOSTALGIA FARM

Tom, Earleen & Natalie Roberts ~ (502) 743-5632 ~ Pendleton, KY ~ www.nostalgiafarm.com

Layout: HughesDesigns.com

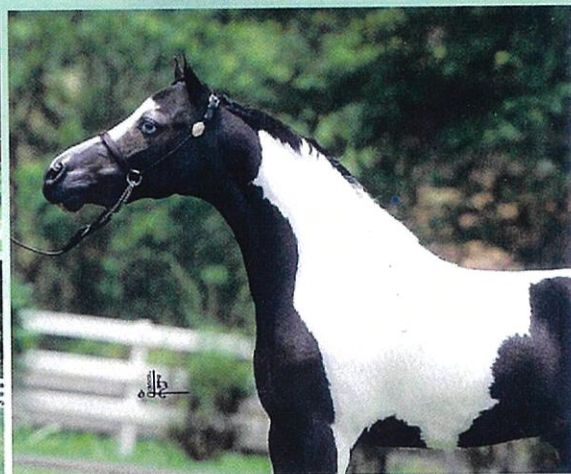
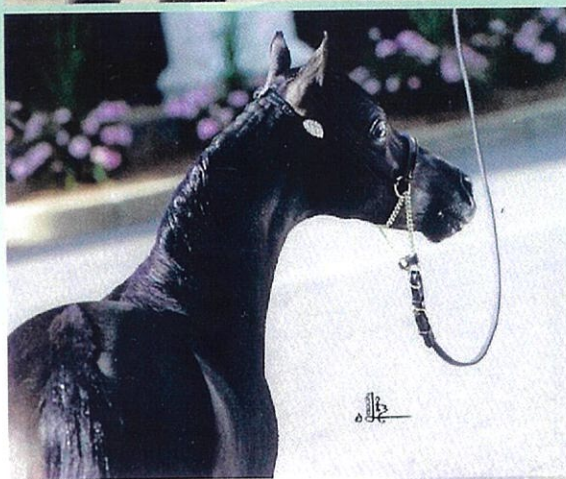
MONEY



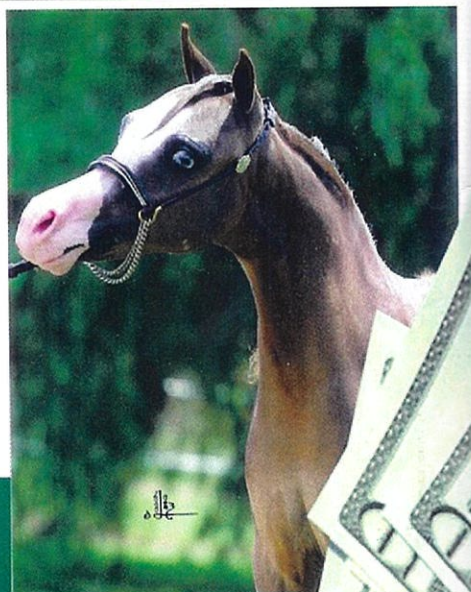
...who says it can't
buy Everything!



Handler in show
photos is Mike Hlavatovic.



For those who want everything...
...call or visit our website
for a current sales list.



NOSTALGIA FARM

Tom, Earleen & Natalie Roberts
(502) 743-5632 ~ Pendleton, KY ~ www.nostalgiafarm.com
Layout: HughesDesigns.com

Front Cover

The stallions of Nostalgia Farm
Nostalgias Silent Investor, Nostalgias Six Sigma and Nostalgias Show Me The Money
Owned By Natalie Roberts

Contact details

President: Jill Robinson.

New Close Farm, Calf Fallow Lane, Norton, Stockton on Tees. TS20 1PQ

Tel 01642 534544

Email: mhcgb2@aol.com

Vice President: Joan Baker

Gorse Cottage, Pollards Road, Ravenscar, Scarborough, North Yorkshire. YO13 0NB

Tel 01723 870517

Treasurer: Wendy Lees

12 St Nicholas Close, Austrey,

Warks. CV9 3EQ

muffin1360@aol.com

Secretary: Janice Goudie

'GreenGarth' 28 Whitburn Road, Cleadon Village, Tyne & Wear, SR6 7QP.

Email: jsg123@supanet.com

Tel 0191 5362763

PR Officer: Cheryl Clark

22 California, Witton Park, Bishop Auckland, DL14 0DR

Minarahalters@aol.com

Tel 01388 603927

Advertising Rates

Front Cover can be requested for £100

Full Page Colour £70 Half Page £50 Quarter Page £30

Black and White Full Page £50 Half Page £35 Quarter Page £20

DEADLINE DATES:

Summer Edition	June/July/August	25/05/08
Autumn Edition	Sept/October/Nov	25/08/08
Winter Edition	Dec/January/Feb	25/11/08

Editors Note

This is your club. We are always delighted to hear from our members. Please send us any suggestions, news, recommendations or your success stories. Many thanks to all our advertisers and contributors in this edition.

We are always keen to receive any articles or photos for our News Review.

Please email to simon.hall14@ntlworld.com

For all club updates please see our website

www.mhcgb.net

Presidents Letter

Dear members

Welcome to our bumper Spring issue. Lots of articles, photos and advertising and a first for us, a full colour issue. Hope you all like our new look.

Well here we are into March already, seven weeks to the National Spring show and the foaling season shortly getting underway. My favourite time of year. Great anticipation and lots of excitement.. is that hairy creature going to clip up to a show champion...and is your favourite broodmare going to produce your dream baby. Good luck to everyone awaiting their new arrivals.

The National Spring Show once again has AMHA sanctioned status, on behalf of Catherine our show manager I would like to remind everyone to have your AMHA paperwork in order and transfers completed prior to close of entries. AMHA do fine MHCGB for any errors so please help Catherine as much as possible.

I would like to say a huge thank you on behalf of MHCGB directors to our newly appointed PR lady Cheryl Clarke. Cheryl is working extremely hard and doing a tremendous job. All the sponsorship packages are taken for studs/individuals and only a few business packages remain for the Spring show. Cheryl has also secured us new classes at a number of shows up and down the UK please look further on in this issue at the show dates. Please try to support these new shows, if they have little support they wont have us back.

Cheryl has also secured us classes at a very prestigious show organised by the British Morgan Horse Society in May. The show gives members a further opportunity to be judged by an AMHA senior judge, Mrs Blue from the US. Please support this new show I'm sure it is going to be a super day out and perhaps an introduction to a new American horse breed.

I would also like to say a big thank you to Val Cridge, our new member in Devon. Val has had lots of experience in PR work and was past editor of the Arab Horse Magazine. Simon, Cheryl and Val together have come up with this bumper issue.

The miniature horse industry seems to be booming once again. Janice our secretary reports 36 new members in the last two weeks, a record for MHCGB. We hope to see lots of new faces at our shows this summer..

Looking forward to seeing you all at the Spring show. Don't forget the Sponsors pre show party the night before.

Kindest regards
Jill Robinson
President

On a personal note I would like to express my thanks for the condolences I have received following the loss of my beautiful stallion FLF Stars Lunar Eclipse or Shooter to his friends. He has been a national champion driving horse and sired many champion foals both here and in the US. His needless loss has hit me very hard.



Toyland Falabellas International
33222 N. Fairfield Rd
Round Lake, IL 60073 - USA

*Specializing In
Pure Falabellas and
Falabella Blends*

Contact: *Laurie Stevens*
Email: minihorseL@aol.com
www.toylandminihorses.com

*Beautiful Foals!!!
World Wide Shipping
All Colors!*

QUINTESSA

QUINTESSA ELECTRIBUTES DOMINUS

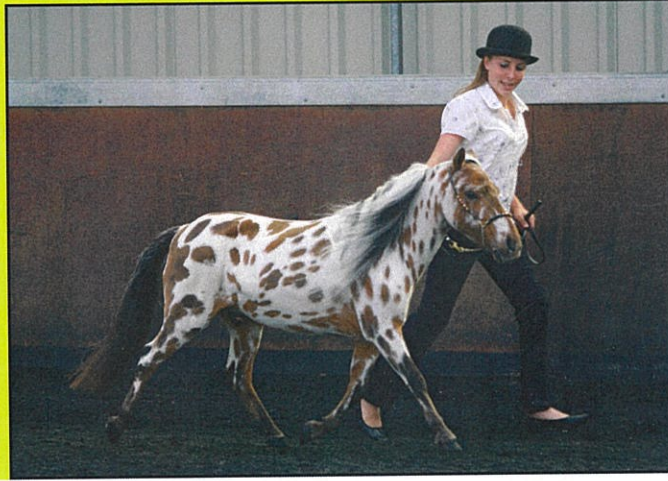
THE AMHA 2006 WORLD GRAND CHAMPION JUNIOR STALLION
AND HIS DISTINGUISHED SIRE: CELEBRATIONS TENNESSEE TRIBUTE

2008 World Contender Sr. Stallion



QUINTESSAFARM.COM
USA

NATIONAL CHAMPIONSHIP SHOW GALLERY 2007



SHOW RULES 2008

1. Horses must be entered in the correct class, observing the correct age.
2. Category A Miniature Horses must not exceed 34" in height at maturity, measured from the last hairs of the mane at the base of the neck.
3. Category B Horses exceed 34" and not exceed 38" at maturity.
4. Handlers must be suitably turned out. Hats, gloves, boots and jackets are required. Training shoes are optional for performance classes.
5. The judges decision is final.
6. Exhibitors are required to withdraw from a class if the judge has an interest in his or her exhibit. For the purposes of this rule, a judge has an interest in an exhibit if he/she has bred, owned, trained or has a financial interest in it.
7. Any horse acting in an unruly manner will be excused from the ring by the judge or steward for safety reasons.
8. The names of exhibits will not be made known to the judge until after the class. Exhibitors will be issued with a number for each horse that must be displayed whilst that horse is in the ring.
9. Cruelty, abuse or inhumane treatment of any horse will not be tolerated by show management and the offender will be barred for the duration of the show.
10. Conduct by an exhibitor, trainer or owner deemed unsportsman like, abusive or detrimental will not be tolerated the MHCGB, including but not limited to, threatening, abusive or intimidating conduct (physical, verbal or written) toward any show official or fellow exhibitor. Any person guilty of such conduct should be reported immediately to the show management. The management will suspend the offender for the duration of the show. Any person accused of unseemly behaviour may appeal his/her case to the council of the association which will render a decision. If found guilty such a person may be banned from further participation in Club events and a decision will be published in the official publication of the Club.
11. Exhibitors are requested not to converse with the judge unless initiated by the judge.
12. Late arrivals will not be admitted to the ring once the gate has closed or the class has commenced.
13. a. Objections must be made in writing with a £50 cash fee to the show committee no later than one hour after the alleged incident. The fee will be returned to the protester in the event the protest is sustained. If the protest is not sustained the fee shall be forfeited.
14. Any protests shall be adjudicated by a protest committee of three show officials not involved with the incident/dispute.
15. The show protest committee shall meet promptly and adjudicate the issue, make effective its decision upon the parties in interest and report its determination to all parties. A show protest committee may disqualify a competitor and or his/her entries for the duration of the show.
16. Any member/exhibitor issuing a dishonoured cheque, or failing to pay any obligation owed to the MHCGB or an MHCGB approved show shall be withdrawn all member privileges and shall be barred from further MHCGB events until the debt is discharged in full. All debts to the MHCGB shall be paid within 15 days. Any suspensions/denial of privileges shall terminate upon full payment of the obligation due.

PRESENTATION FOR SHOWING.

The permissible methods for showing are:

- a. Freshly clipped
- b. Clipped with new coat established

So long as the horse is neat, healthy and well presented.

Manes and tails are natural & unplaited (with the exception of performance classes). Pulling or shortening of the mane is permissible). A bridle path may be clipped into the mane to enhance the outline of the horse. Tails are to be trimmed clear of the ground.

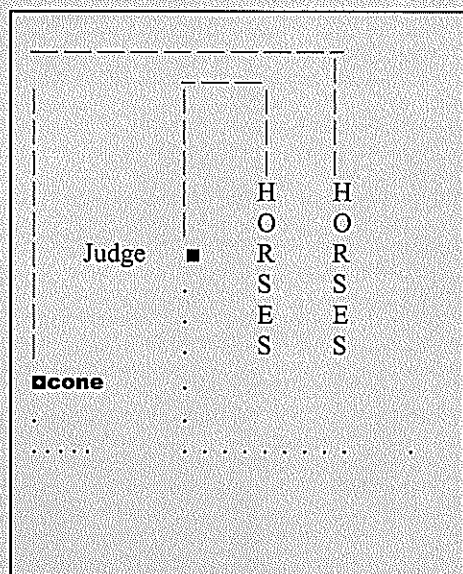
Alteration of the natural colour of the horse is not allowed, however, subtle use of makeup to enhance a natural colour is allowed.

Horses are to be shown not stretched, which means all four feet are flat on the ground and at least one front and one rear cannon bone remain perpendicular to the ground. Stretched horses to be penalised after the initial warning by the judge in each class. It is permissible to hand set the horse.

General preparation and presentation is at the discretion of the owner, but the MHCGB wishes to promote the horse as being shown at its best visual and health advantage to portray the breed as one of beauty, intelligence and gentleness. NOTE: 'circus' or 'cute' type presentation is not relevant in any class other than the costume/fancy dress class

2006 amendment The MHCGB showing style.

Horses are to enter the ring, individually in catalogue order, at a walk clockwise on a loose lead to a designated point marked by a cone approximately 20 feet from the gate and then proceed at a trot past the judge/s. Judging will begin at the cone. Line up horses head to tail along the ringside, teeth and testicles are checked for correctness. The judge then re takes his/her position in the centre of the ring. From line-up, competitors walk to judge and trot past, back to the end of line, to assess straightness of movement. Horse are then posed nose to tail approx 15 feet from the edge of the ring and with sufficient distance between to allow judges to assess horses from all sides. Horses are assessed individually in the nose to tail line up. (See diagram). The final line up is then called in and Rosettes are awarded.



..... Walk

___ Trot

Judges are asked to discourage exhibitors from sitting, squatting, kneeling in front of horses (with the exception of showing weanlings). If after a warning is given, exhibitors may be penalised

The horses are judged on:-

1. TYPE the horse must possess horse like qualities in a smaller size and proportion. Pony-like traits are not desirable in the modern miniature horse.
2. CONFORMATION. Consider the correctness of structure and conformation. Identify any faults and weaknesses.
3. QUALITY which includes the harmony and balance of body parts, the refinement and density of bone in the legs and the smoothness of muscling.
4. WAY OF GOING Perhaps meriting a higher consideration. Not just the quality of movement but the technical correctness of the stride, articulation of the joints, elevation and impulsion.
5. PRESENCE.

CHAMPIONSHIPS.

The first and second places from the applicable classes are called to the championship.

First placed horses form the front line, second placed horses stand behind the winner of their class. Horses are asked to walk/trot out at the discretion of the judge. The horses are posed for the judge to reassess. Champion and Reserve champion are selected.

SPECIALITY HALTER CLASS – COLOUR CLASSES.

These classes are judged on 80% colour, 20% conformation.

Horses are walked into the arena, then asked to turn and walk in the opposite direction. Horses are then lined nose to tail in rows allowing space for the judge to pass between each horse to assess. The horses are trotted at the discretion of the judge.

The following classes are available:-

Broken Colour ie, pinto, appaloosa, pintaloosa.

Solid Colour ie, any other colour

Spotted ie; appaloosa, pintaloosa

Broken colour ie; pinto, piebald, skewbald

Solid ie; bay, chestnut, grey, black, brown.

Any other colour ie; silvers, palaminos, buckskin, grulla, roan etc.

DRIVING CLASSES.

Horses are to be serviceably sound and must be three years old or older.

Drivers should strive to present an appropriate turnout that conforms to the class entered. Suggested attire:-

Gentlemen, hat, jacket, tie, trousers, gloves & ladies tailored suite, skirt and blouse or evening dress (where appropriate) hat and gloves.

Whips must be carried at all times, failure will result in disqualification.

Headers are acceptable.

SINGLE PLEASURE DRIVING.

The horse should give the appearance of a pleasurable drive. It should also show animation and brilliance of movement.

Horses are to enter the ring counter clockwise at a collected trot. Gait requirements - Walk, Collected Trot and working trot on both reins. The horses are required to stand quietly and to rein back.

This class is judged on Performance, manners, way of going, conformation, appropriateness, Condition and fit of vehicle and harness, Neatness of attire.

IN THIS ORDER

COUNTRY PLEASURE DRIVING.

Country pleasure is judged on attitude, manners, performance, quality and conformation IN THAT ORDER.

Horses must be on the bridle, with a relaxed neck carriage, high action must be penalised, it is imperative that a horse give the distinct appearance of being a pleasure to drive.

Gait requirements – walk, pleasure trot and working trot on both reins. Stand quietly and rein back readily.

HORSES MAY ENTER EITHER COUNTRY PLEASURE OR SINGLE PLEASURE.

CONES DRIVING.

Horses complete a timed coned course incurring time penalties of 2 seconds when lowering balls from the cones.

A judge may dismiss from the ring any unsafe horse, vehicle or equipment.

JUMPING CLASS.

Horses must be aged 3 years or over.

Classes will be judged with 4 faults for a knockdown and 3 faults for a refusal. Jump offs occur for ties of first place only, each horse shall re jump a raised course until the horse with the lesser faults is declared the winner.

OBSTACLE CLASS.

Horses must be aged 2 years or over.

An obstacle course will be constructed and can be viewed by competitors and judges. The class is judged on performance and way of going with the emphasis on manners throughout the course. Entries will be evaluated on responsiveness and willingness, plus general attitude.

Maximum time per obstacle 60 seconds, horses are then asked to advance to the next obstacle

A score sheet system is advised to give a possible mark out of 10 for each obstacle.

LIBERTY.

Liberty is demonstrating the natural beauty of the horse. Horse are to be judged on style, grace, animation, gaits, presence, music and suitability, ease of catching.

Judging begins when the halter is removed. Time of liberty is 1 ½ minutes, time to catch, 1 ½ minutes. (If not caught until after the 1 ½ minutes the horse is disqualified)

One exhibitor (wearing the number) and one handler allowed in the ring. Horses to be caught by the exhibitor on touching of the horse during 1 ½ minutes at liberty will count for disqualification.

The following assessment can be made. Style and grace 30 points, animation and presence 30 points, gaits 30 points, music and suitability 10 points, catch 10 points.

PROGENY CLASSES

Horses enter the ring and are lined up nose to tail in groups. The judge, at his discretion, may ask to see horses movement.

Produce of dam.

To be judged with emphasis on the reproductive likeness, uniformity, quality of breed characteristics and confirmation. The minimum of two offspring and a maximum of 4 per entry. Any sex of offspring may be shown. One number is issued per group of horses.

Get of sire.

This class will be judged with emphasis on the reproductive likeness, uniformity, quality of breed characteristics and confirmation. The minimum of two progeny and a maximum of 4 per entry. Any sex may be shown. One number is issued per group of horses.

Two/three horses by one owner.

Any two/three horses owned by the same owner. Judged on quality of conformation and breed characteristics.

Horse by same breeder.

Judged on quality of conformation and breed characteristics.

Pairs.

Judged on likeness of both horses.



STOP PRESS NEW SHOW

13TH AUGUST PONIES UK, NEWARK SHOWGROUND, NEWARK, NOTTS.

MHCGB AND IMHPS ARE JOINING FORCES BY KIND INVITATION OF TIKKI ADORIA TO PRESENT A FULL DAY OF MINIATURE HORSE SHOWING, A GREAT CHANCE TO QUALIFY FOR TWO PRESTIGIOUS CHAMPIONSHIP SHOWS ON THE SAME DAY. SEE WEBSITE FOR FURTHER DETAILS www.mhcgb.net



WELCOME NEW MEMBERS



LAURIE STEVENS	U.S.A
SAMANTHA WHEATLEY	CAMBRIDGESHIRE
KIRSTY HUGHILL	CLEVELAND
RICHARD GALE	CLEVELAND
MICHAELA ARCHER	DEVON
MARLYN POLLARD	DEVON
KATIE GREENAWAY	ESSEX
BARBARA MOSS	ESSEX
TRACEY BURTON	ESSEX
KAREN BEALE	ESSEX
JAMES BARKER	ESSEX
KELLY O'SULLIVAN	ESSEX
STACEY O'SULLIVAN	ESSEX
KARLA ELAINE HUTCHINS	HERTFORDSHIRE
DOMINIQUE RHODEN	LANCASHIRE
DEVON JONES	LANCASHIRE
MR & MRS TURNER	LINCOLNSHIRE
SUSAN ARROWSMITH	LINCOLNSHIRE
SARAH HAMPTON	LONDON
PETER HOWARD	LONDON
NORMAN GRAHAM	NORTHERN IRELAND
KELLEE GRAHAM	NORTHERN IRELAND
TODD GRAHAM	NORTHERN IRELAND
ANNETTE HELM	NORTH YORKSHIRE
MARK HARPER	NORTH YORKSHIRE
WILLIAM HARPER	NORTH YORKSHIRE

LAUREN CLARK	NORTHUMBERLAND
HARRIET LARSEN-BOWN	NORTHUMBERLAND
ELLIE RAMSAY	NORTHUMBERLAND
RACHEL ISAACS	SOMERSET
CLARE CARDWELL	SOMERSET
GORDON MARTLEW	SOUTHPORT
BARBARA EDMUNDS	SURREY
KATHY LEPPARD	EAST SUSSEX
CATHERINE LEE	WORCESTERSHIRE
SAMANTHA DAVIES	WALES
EMMA DAVIES	WALES
JOHN DAVIES	WALES
MELANIE LEWIS	WALES
D R MARTIN	WALES

Glenns General Patton



Rodsworthy UK

Specialising In Pure Bred American Miniature Horses



ERL Voltaire's High Voltage

The progeny of four outstanding champions.

We are proud to continue the Patton Dynasty in the UK

www.rodsworthyuk.com / rodsworthyuk@btinternet.com

Tel: 01769 550444 / 07795412844

ERL Voltaire



WF Sweet Revenge



ERL Spectacular Bey



SHOW DATES 2008

Please check the club website www.mhcggb.net for further updates

30th March
Training Seminar and Miniature Horse Show
Croft Riding Centre
Spring Lane,
Croft,
Warrington.
9.30 a.m. start
Training and Judging: Jane Davenport Lister
Further Details from Anne Deakin
Tel: 01925 821444

19th April
National Spring Show
Arena UK, Grantham
Secretary: Mrs Catherine Marshall
19 Whitestone Close
The Ings
Redcar
TS10 2PS
Tel: 07504924406
(no calls after 8.30 p.m)

27th April
NPS Area 14
Secretary: Mrs M. Kidman
Romans Farm
Rettendon Common
Chelmsford
Essex
CM3 8ES
Judge: Mrs J Kilbey

27th April
Hambleton R.C.
Langdale Stables
Richmond,
North Yorks
Secretary: Mrs V. Pape
Grange Farm
Croft on Tees
Darlington
DL2 2TF

4th & 5th May
Leicestershire County Show
Secretary: Mr A. Hardy Smith
Leicestershire Agricultural Society
Dishley Grange Farm
Derby Road
Loughborough
Leics
LE11 5SF
5 Classes + Championship
Judge: Elaine Kind

18th May
Area 4 Show (Wales)
Sunnybank Equestrian Centre Show
Sunnybank Farm,
Rudry Road,
Rudry,
Caerphilly,
Wales,
CF83 3DT
www.sunnybankec.com
Email: terrina@sunnybankec.com

18th May & 7th September
Weyhill Shows
Secretary: Mrs S Matthewman
41 Abbatt Close
Ludgershall
Andover
Hampshire
SP11 9PQ
Tel: 01264 398324
Shadel@ntlworld.com
5 Classes
Judge: Mrs L Belcher (May Show)
Mr P. North (September Show)

24th May
The British Morgan Horse Spring Show
Moreton Morrell
Warwick
Warwickshire
Secretaries details to follow
Judges: Jane Blue AMHA senior judge (refined and AMHA classes)
UK judge to be confirmed

25th May
22nd June
24th August
South Essex Riding Club shows
Secretary: Jackie Maynard
5 Roachvale
Leigh on Sea
SS9 5TQ

1st June
NPS Show Chyverton Park
Nr Zelah, Cornwall
Secretary: Cheryl Fox
Country Rider
The Old Mill
Blackwater
Truro, Cornwall
TR4 8EG
Email: Cheryl@country-rider.co.uk
Tel: 01872 561172
Judge: Mr L Partridge

5-7th June
Royal Cornwall Show
Secretary: Mr C. P Ruiddle
The Royal Cornwall Showground
Wadebridge
Cornwall
www.royalcornwall.co.uk
Judge: Miss N Faulconbridge

8th June
Cadnam Show Society
Hazel Long
501 Romsey Road
Maybush
Southampton
Hants
SO16 9GQ
Email: hazel-long@yahoo.co.uk
Tel: 07789 888375 or 02380 776854
www.nfed.co.uk

14th June
Northern Regional Arab Horse Society Group
Amateur Show
Wetherby Racecourse
3 Classes
(will be split if sufficient entries)
<http://www.northernarabianhorse.com/>

22nd June
Derbyshire County
Secretary: Miss E Rusthon
50 Spencer Avenue
Sandiacre
Notts
NG10 5DA
3 Classes
Judge: Mrs E. Kind

5th July
Bedfordshire Country Show (Area 7)
Secretary: Mrs Catherine Marshall
19 Whitestone Close
The Ings
Redcar
TS10 2PS
Tel: 07504924406
(no calls after 8.30 p.m)

13th July
Ashby de la Zouch Show
Secretary: Mrs L.A. Ensor
Ashby Show office
Tithe Farm Livery Stables
Boundary
Swadlincote
Derbyshire
DE11 7BA
Judge: Mrs J. Stacey

26th July
Area 5 Show
Sheepgate Equestrian Centre
Boston
Lincs
contact Area Rep Pat Englund

27th July
NCPA Leicestershire & Rut-
land Branch Open Summer Show
Secretary: Mrs C. Graham
25 Beverley Drive
Kimberley
Notts
NG16 2TW
5 classes + Championship
Judge: Miss S. Jarrom

2nd & 3rd August
All Miniature Breeds Show
Jane Davenport-Lister
Aesthete Stud
Ramor House
North Street
Owston Ferry
Nr Doncaster
Tel/Fax: 01427 728266 / 873602
Mobile: 07890 667056

15th August
Dunster Show
Minehead
"Kindly Sponsored by Connolly's Red
Mill"
Secretary: Mrs. R Langdon
Apple Tree House
Higher Vexford
Lydeard
St Lawrence
Taunton
Somerset
TA4 3QF
Tel: 01984 656900
Judge: Debbie Tyler Davies

28th August
Monmouthshire Show
Monmouth Showground
Secretary: Mrs Kay Spencer
Parclands House
Raglan
Monmouthshire
NP15 2BX
<http://www.monmouthshow.co.uk/default.asp>

13th & 14th September
**National Grand Championship
Show**
incorporating
**The UK American Miniature
Horse of the Year Show**
Southview Arena
Wettenhall
Cheshire CW7 4DL
Secretary: Mrs Catherine Mar-
shall
19 Whitestone Close
The Ings
Redcar
TS10 2PS
Tel: 07504924406
(no calls after 8.30p.m)

Stop Press / New Shows

21st June
Saintfield show
at Oughley Road
Saintfield (1/2 mile from Temple Crossroads)
Northern Ireland
Sec: Mrs Phyllis Campbell
24 Ballyminstragh Road
Killinchy
Co Down
BT23 6RE
Tel: 028 97 541716 / Fax 02897 541142
24
www.saintfield-show.co.uk

28th June
Crowland Show
Sec: Mrs J Hewfrey
Gull Farm
Despins High Bank
Spalding
Lincs
PE22 3DY
5 classes
Judge Mr G. Bennett

13th August (Wednesday)
Ponies UK Summer Championships
By kind permission of Tikki Adorian
MHCGB is joining forces with IMHPS to present a full
day of miniature horse showing. This will be the chance
to qualify for 2 prestigious Championship shows in one
day.
(MHCGB Champ show)
(IMHPS MHOYS)
Secretary: Janice Goudie
Greengarth,
28 Whitburn Rd
Cleadow Village
Nr Sunderland
Tyne & Wear
SR6 7QP

6th September
Llandysul Show
Sec: Beth Davies
Tynewydd Gorrig
Llandysul
SA44 4JP
3 Classes

THANK YOU

THE MINIATURE HORSE CLUB OF GREAT BRITAIN WOULD LIKE TO EXTEND THEIR THANKS TO THE FOLLOWING WHO HAVE KINDLY SPONSORED AT OUR FORTHCOMING NATIONAL SPRING SHOW AT ARENA UK.

MARGARET AND MALCOLM HILLYER OF VISIONS

JILL JONES OF SUPREME DREAM MINIATURES

SHIRLEY CHARLTON OF ARAMIN

KATHY PHILLIPS OF RODSWORTHY UK

ANNE HAWKE OF GLASSES FARM

EILEEN YAXLEY OF DONABI UK

CHERYL AND ERIC CLARK OF MINARA HALTERS

PAT EVERY OF KINDLEWOOD MINIATURE HORSES

JANE PARKER OF CONUNDRUM MINIATURE HORSE

WENDY LEES OF MINUTA MINIATURES HORSES

MS LAURA BIAS

MRS JOAN BAKER

MR SIMON HALL

J S GOUDIE OF MESMERIZE MINIATURE HORSES

JILL ROBINSON OF NEW CLOSE FARM MINIATURES

LOUISE AND PAUL ARMITAGE OF BLACKMINS MINIATURE HORES

PAMPERED PONIES

EQUINE CLOTHING COMPANY

TOYLAND FALABELLAS INTERNATIONAL (USA)

NOSTALGIA FARMS (USA)

QUINTESSA MINIATURE HORSES (USA)

THOUSAND OAKS RANCH (USA)

WE VALUE YOUR SUPPORT AND HOPE TO MEET YOU AT OUR PRE-SHOW SPONSORS PARTY AT ARENA UK ON FRIDAY 18TH APRIL.

IF ANY MEMBERS WOULD LIKE TO SPONSOR AT OUR GRAND CHAMPIONSHIP AND UK AMERICAN HORSE OF THE YEAR SHOW ON 13TH AND 14TH SEPTEMBER 2008, PLEASE CONTACT OUR PR MANAGER CHERYL CLARK.

It's All About ATTITUDE



Flying Aces Unos Noble "ATTITUDE"

2006 Reserve World Champion Senior Stallions 32-34"

Please visit our website
to see "Attitude" Get For Sale
www.westwindfarms.org

Visit Southwick Training
Stables at the World Show
to see "ATTITUDE"
Yearlings for Sale.

OWNERS:

Westwind
FARMS

Cammie Cavanaugh
Mason, MI
517.349.0527
westwindfarmsmi@aol.com

Flying Ace Farms
Suzy Hamilton
Jackson, MI



Importing Miniature Horses from the United States

By Dianne and Terry Nielsen

Owners/Managers - EZ 2 Spot Ranch Equine Isolation Facility

As owners/operators of EZ 2 Spot Equine Isolation facility, we have the pleasure of working with horse people from all over the world. We have a lot of fun with this business, and have made some wonderful friends on several continents. Every now and then however, we see things that make the transaction difficult. In most cases, these are problems that can be prevented. It's a matter of having enough information about the process of importing a horse.

In the following article we are going to give some tips and information that will (hopefully) "shed some light" on the steps involved to make it more enjoyable for all of us.

Selecting Your Horse

You have now found the "perfect horse". Or, at least you think you have. It's on the internet, and the pictures look beautiful! So now what do you do? The best answer is to work with an agent in the USA who can evaluate the horse for you, or come over for a visit so you can check it out in person. Be sure to check on the qualifications of anyone you hire to represent you and make sure that their area of expertise matches the use you have planned for the horse when you get it back to the United Kingdom.

Be prepared to ask the right questions by familiarizing yourself with the shipping process before purchasing an animal.

Is the Horse Halter Trained?

This is an important question to ask. Perhaps a little less important with a miniature horse than with a full size horse, but important nonetheless. This is important because horses that are being shipped overseas have to be handled.....a lot! They must be halter trained because, during their time at a high quality isolation facility they will be led from their pens to an exercise area frequently. They will need to stand for the veterinarian to draw blood for testing and vaccinations. They will need to stand for the farrier, if trimming is needed. They will also need to be handled for general grooming, hoof cleaning and brushing. They need to be comfortable being around people, and accept being handled by different people at different times. Buying a horse who has been running wild in the pasture all his life and rarely touched by human hands does not generally make for a happy shipping experience

Choosing An Isolation Facility

There are several equine isolation facilities in the United States. All must be inspected and approved by the United States Department of Agriculture prior to the beginning of each isolation period.

The criteria you use for making your choice is an individual matter. We recommend that you get as much information as possible. Talk with friends and colleagues who have imported horses in the past.

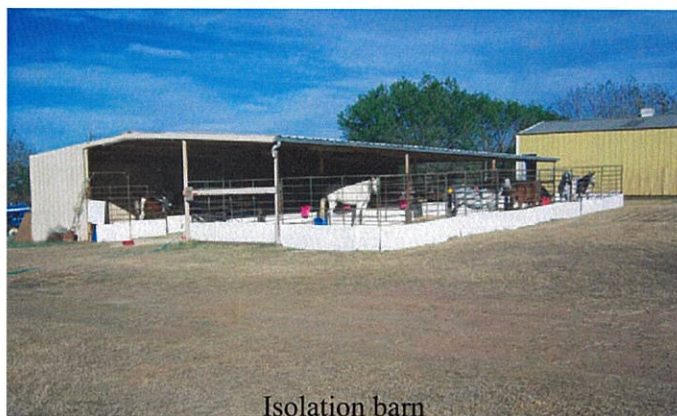
Ask out about the way the horses are shipped and the facilities in which they are cared for.

Ask about the condition of their horses when they arrived.

Find out about the staff who will work with the horses - their expertise in international shipping and their knowledge of equine care.

Call or email the facility and ask questions. Don't worry about being a pest. It's important to ask as many questions as you have so that you gain as much information as possible.

visit the facility's website or, better yet, arrange a personal visit to the facility when you're in the U.S.A. If you are told not to come or you feel that your visit is unwelcome, be concerned. A high quality isolation facility will always welcome guests.



Isolation barn

What Blood Tests are Required?

Tests that are currently required for shipments to the European Union are Equine Infectious Anemia (EIA) and Equine Viral Arthritis (EVA). Both tests must have negative results in order for the horse to enter the E.U.

All horses must be tested for EIA prior to shipping. You may have heard this referred to as a "Coggins". The Coggins test must be done within 30 days of shipping, while the horse is in isolation. A positive coggins is very rare in the U.S.A.

EVA testing is required only for stallions who are six months of age and older. The blood must be drawn within 21 days of export. EVA is a fairly common respiratory disease that may show up as a stuffy nose or it may present no symptoms at all. Oftentimes the first time an owner finds out that a stallion has had EVA in his lifetime is when he goes to be exported and the blood test comes back positive. This is always an unwelcome surprise, because suddenly you are faced with the fact that the animal cannot be shipped. It is not because the animal is ill, but because EVA can be passed from a stallion to a mare during breeding and cause abortion. A pre-purchase EVA test might be wise for prospective stallion buyers. Be sure that they specify that it is for export, because the test result for exporting horses must meet certain criteria that are not required for transport within the United States.

What About Vaccinations?

Required vaccinations for horses being exported to the European Union are Eastern & Western Encephalomyelitis. It is important that the proper type of vaccine be administered. This is done at least 31 days prior to export. We prefer to provide that vaccination to horses a day or two before their isolation starts. That allows us to know the details about the type of vaccine that was used so that we can report that information accurately on the health certificate.

While the horses are at the quarantine station for the required isolation period, there are strict guidelines that must be followed by everyone on the ranch who interacts with the horses. Clothing, including footwear, must be changed and/or sanitized each time they enter the isolation area. Only authorized personnel are allowed in the isolation barns.

All feed and hay must be kept separate from that for other animals on the premises, and separate equipment (rakes, buckets, water barrels, etc. must be sanitized and kept separate as well. It's a lot of work ... and a job that we take very seriously here!

International health certificates are prepared during the isolation period. When all the blood test results are in with negative results, the health certificates are signed and sent to the United States Department of Agriculture for endorsement. They are then returned to the isolation facility so that the papers can accompany the horses on their journey.

What Happens On Shipping Day?

When the isolation period is over and the big day has arrived, the horses are loaded into an enclosed, sanitized trailer for the trip to the airport of departure. (In our case, this is George Bush Intercontinental Airport in Houston, Texas.) Upon arrival at the animal health facility at the airport, the horses are unloaded for a second, short-term (5-hour) isolation period during which time they will be examined and observed by the United States Department of Agriculture port veterinarian. Their International Health Certificates also are examined and they receive their final government approval.



When they are given permission to depart and the flight time is drawing near, they are led up a ramp into an enclosed container designed for equine shipping. The environment is frequently busy and noisy with jets flying overhead, other horses being loaded into containers and unfamiliar surroundings and people. It can be a stressful experience for minis!

When the horses are in their containers, the containers are then loaded onto the aircraft for the flight to their destination. For most European airports, this means being in the container for a total of 10 to 14 hours. For other countries, this period may be considerably longer.

During the flight, the animals from high quality isolation facilities have attendants who are with them during take off, landing and who check on them several times throughout the flight

It is the attendants' job to keep the horses calm, keep an eye on their health and well-being, offer them water and make sure that they have hay within reach at all times.

When horses are isolated at EZ 2 Spot Ranch, someone from our ranch personally flies with the horses. If it is not one of the owners/managers (Dianne and Terry Nielsen), it will be the facility's on-site veterinary technician, farrier or ranch assistant. In any case, we ensure that the horses have their own personal flight attendants who know and understand each individual in the group!

There are some isolation facilities that reduce costs by putting minis in wooden crates and shipping them as "regular cargo", without attendants. This means that there is no one on the flight to check on the animals, offer them water, handle an emergency illness or accident or provide any measure of comfort or care. While this is perhaps a less costly way to ship horses, it is not a level of service that our conscience will allow us to provide. Even if they travel in custom-built crates, horses that ship from EZ 2 Spot Ranch are always attended throughout their journey.

Where Do They Arrive?

At the end of the flight, the container will be taken to the animal facility at the arrival airport. Many of our UK clients choose Prestwick, Scotland as their airport of arrival. Other convenient choices are Amsterdam or Luxembourg. Upon arrival at the animal facility, the horses are led out of the container, into the inspection area where they undergo yet another veterinarian's examination. When they have been given a clean bill of health and their paperwork has been processed, they are ready to go home.

Some buyers arrange to pick up their horses themselves, while others prefer to use professional hauliers. If you choose to use a professional, again be sure to check references and talk with others who have used their services. There are some excellent hauliers who regularly transport horses to the U.K. and we would be happy to help you contact some of them, if you need assistance in this matter.

When they finally arrive home, it will be the end of a long and exciting adventure. You can expect your new mini horse to be tired and ready for some quiet time to rest and to get to know you and his or her new surroundings.

Do You Want to Know More?

Those of us at EZ 2 Spot Ranch Equine Isolation are here to help you, whether you are an experienced importer, are considering buying a horse from the U.S.A. for the first time, or are just curious about the process. Please feel free to contact us at your convenience at Ez2spot@hotmail.com or by phone at: (830) 665-4121 (ranch facility), Terry's cell: (210) 244-3404 or Dianne's cell: (210) 861-0269 (mobile). We also invite you to visit our website, www.ez2spotranch.com We look forward to hearing from you! **A Members first hand experience of importing horses will appear in the next issue (by area rep Sharon Matthewman)**



SPRING SHOW NEWS

NEW FOR 2008 MINIATURE SHETLAND CLASSES

ALL STABLING REQUEST FORMS MUST BE SENT WITH PAYMENT TO JANICE GOUDIE AND NOT TO ARENA UK

POINTS CARDS WILL BE AVAILABLE ON THE DAY AT A COST OF £5.00 PER CARD PER HORSE

MHCGB POLO SHIRTS AND SWEATSHIRTS WILL BE ON SALE FROM THE SECRETARY, HELP US TO PROMOTE MHCGB.

Providing World Wide Transport Services

Specializing in Miniature horses & Miniature donkeys

We transport equines from the USA to Europe, South Africa, Asia & the Middle East

**EZ 2 Spot Equine Export
Isolation Station**



Ground transportation from anywhere in the continental USA to our facility

USDA Approved Export Isolation Station

USDA Approved Vector Controlled Barn

Owners on Premises - 50+ years of horse experience!

Daily turn out, Grooming, Personal Attention & Care at no additional charge

Clean, Safe Environment - Extra Large Stalls

Qualified Grooms Accompany Horses on Flight

Call for more information and/or references!

telephone: (+) 830.665.4121

cell phone: (+) 210.244.3404

fax (+) 830.665.9607

email: ez2spot@hotmail.com

website: www.ez2spotranch.com

Member in the Spot Light

As long as I can remember, I've been mad about horses, any shape, size or colour! As a child, my wish list always included a pony unfortunately the nearest I got to owning my own horse was a "Sindy" horse (giving my age away there) and rides on the donkeys at the beach.

When I started work, I set about realizing my childhood dreams, learning to ride at a fantastic riding school on a 16.2 ex-police horse called Chris. After a couple of years, I felt ready to take the responsibility of full-time horse ownership and spent the next few years owning several different horses.

Then I changed my career and started training to become an Environmental Health Officer which meant less time for horses. So I swapped mucking out and riding for revising and exams!



After my horsey break, I was told about a small pony left in a field that had terrible sweet-itch who needed a home desperately. So she came to me. Midge was tiny but started to grow rapidly with good food and TLC, at first, I thought she was a Shetland but it soon became obvious that there was something else in the mix! So, when she was 4, I had her professionally broken and found a little jockey for her.

But the little horse bug had bitten, so I started to look around at miniature horses. I had been to HOYS (as a spectator) that year and avidly watched the Miniature Horse classes. I couldn't believe how small they were or how beautiful. These were the horses for me, my riding days were long gone, as I had stopped bouncing when I hit the ground!! Plus I loved showing, all the preparation, the excitement, the sense of achievement, even the stress!

I had seen a beautiful silver dapple filly on a website and decided she was the one for me. "Goldenoak Silver Tinsel" arrived one day in June 2005 and I have never regretted it for one moment. She is a draught type and very strong-willed, hates the vet with a vengeance and loves food with a pas-



sion. I took her to a show in August that year and realized we would both be on very steep learning curve to meet the standard set in the show ring.

We both worked hard and were rewarded with a qualifying place at the Royal International Horse Show in 2006. Then in 2007, Tinsel started the season by winning the 2 & 3yo Draught Type Filly class at The National Spring Show and ended the season by taking The MHCGB 2 & 3 yo Draught Type Filly Champion of 2007 title at The MHCGB Championships..

Seeing the fun I was having, my husband Mike decided he wanted a piece of the action, well, it was a bit boring for him at the shows. So, we had a look around again and decided to get a Mini that was finer than Tinsel and we settled on "Ujenik Extasys Glory To Be" or Stan, as he's known at home. Stan is a daddy's boy and loves Mike madly. He will do anything for Mike and flatly refuse to do it for me!! That's men for you!

After a couple of showing seasons that have exceeded our expectations, we again decided to expand the family. We now own a beautiful tiny filly called "Aesthete Luckys Little Secret" or Secret to her friends. I hope we have as much fun and success with her as we have had with Tinsel and Stan.



As you can see, I've come a long way from my "Sindy Horse" and I've loved every minute of it (even the bruises) but Miniature Horses are simply the best as far as I'm concerned.

See you all at the shows this year, good luck and have fun.

Sally Moore



THE STORY OF MISSY

On May 13th, 2000, we had a show in New Jersey. It was a great show, and we headed home shortly after noon. It was an extremely long trip but I felt I had to get home. I got home around midnight and needless to say, I was exhausted.

My husband, David, helped me unload the horses and I went to check the mares. Sure enough Honey was waiting for me to get home. No sleep for me! It was time to have a baby. I waited with her until around 3 AM and labor began. I had delivered many babies from Honey, but this delivery was different. The sack was there, but nothing was in it. I was getting nervous as she was working very hard, and it didn't seem like she was getting very far. I decided to open the sack and help. I pulled. She pushed. The legs were there but right with the head. They would not stretch out. Suddenly it seemed to pop. Then as I got the head out, I knew why. It was a dwarf..... Twenty years of breeding miniature horses, and we got our first dwarf. I was so upset. I was one of those narrow minded people that said "I would never keep a dwarf". I sat and debated about taking it outside but I didn't have the heart. Honey turned to look at her new baby and quickly looked back at the wall with a blank stare. She did this twice as if she knew something was wrong. With her other babies you could witness the bonding immediately. This was different for both of us. I decided to go to bed and let nature take its course.

In the morning I went to the barn. Scared that I would find a dead baby that couldn't stand or nurse. As I looked in Honey's stall, I saw the proudest mom of all and a little grey baby sucking up all the milk she could get. I told Honey, "if you can accept this, I can too." After all, it was Mother's Day morning.

I spoke to some friends and told them about the dwarf and I said we have to find her a home quick. Within two weeks, we had a deposit on her. We planned to keep her until we could wean her and then she would go. She did need a name. Since she seemed like a little misfit we decided we would call her Missy "for misfit". Little did we know what a blessing she would be.

Missy was different alright. She was a little bundle of love. She ran loose most of the time and grew on all of us. Then the nightmares started. Every night I would wake up crying because I was dreaming that it was the day that Missy was to leave us. I couldn't function during the day because I just kept trying to think how I could get out of this mess. I couldn't tell the little boy that was counting on Missy being his pet that he couldn't have her now. Then I got the idea to find him another dwarf. So, I made some phone calls and I found one and I returned the deposit with a note of apology. What a relief!!!



Missy would stay with us for as long as she lives and we're not at all embarrassed. She has given us a new understanding of things and we are proud of our little Missy.

We know that God sent us a special little blessing on that wonderful Mother's Day morning. And we are extremely grateful.

No one is perfect and everyone is special in their own way.



On Nov. 5, 2007 Missy passed away quietly after breakfast. Life was getting tough for her as she aged so she will now go run with her new legs across the clouds with all the minis that have gone before her including her Mom. Bless you Missy and Thank you for so many wonderful memories. I'll see you at the gates of heaven. Until then you will be missed and you will live in our hearts forever.

LITTLE BIT'S LETTER TO MOMMY

Mom if you could see me now
You would wipe away that frown
You would smile so big today
If you could just see me play

I now have wings and I can fly
I can soar around the sky
I am God's helper up here above
I teach them all about love

I help the newbies when they arrive
I show them all how they can thrive
They come to me to learn their way
I get a new group everyday.

I go each morning upon the ridge
Just a little north of the Rainbow
Bridge

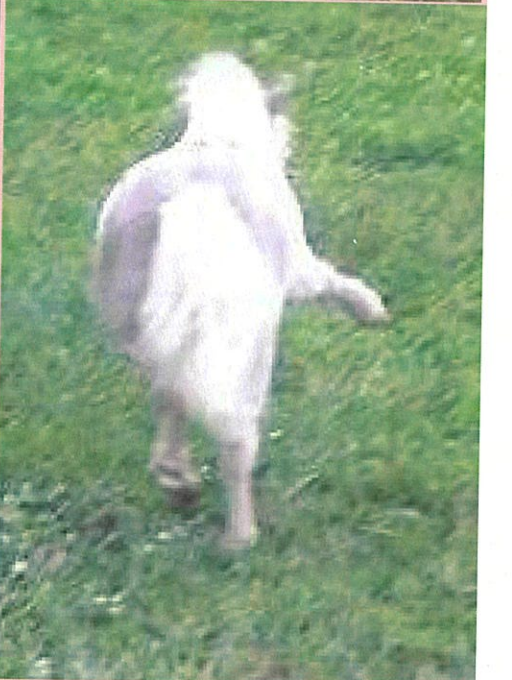
I wait to see who shows their face
Here! Up here! In this wonderful
place.

I greet them as they come across
I run and play for they look lost
I tell them not to worry so much!
They'll make new friends they'll have
a bunch!

You see up here we're all the same!
I feel so healthy I am not lame!
I buck and squeal and run about
I feel so good sometimes I shout!

GOD LOVES ME MOM! HE
PICKED ME OUT!

Marie Smith



BY KIND PERMISSION OF
JONES' MINI-WINNIES



MARESTARE (Web Cam Hosting)

It's late at night and you are surfing the internet, trying to stay awake. You lazily glance at your mare on cam, wondering when she will foal and allow your life to return to normal. You haven't slept straight through the night since foaling season began, and you longingly think of your pillow...and your eyes start to drift shut....

You awake in a panic and glance again at the monitor to find your mare munching on hay, seemingly unconcerned that you are watching her...and your night drags on.

Does this sound like you and your foaling season ritual? It doesn't have to be this way...there are people who will help!

Welcome to Mare Stare, an online foaling community where thousands of viewers help farm owners keep an eye on their stock and their property. Mare Stare, LLC (www.marestare.com) hosts over 250 live cameras all over the world, and we are growing.

So, how does it work?

You purchase a cam...nothing expensive or special, just a good clear, quality cam. You add a video capture device, and the software that Mare Stare provides, and then for a very small fee you stream your camera to Mare Stare where it's broadcast live all over the world.

We can suggest cams and equipment for you and we will walk you through every step of your setup. Actual photo taken from a live cam



What are the benefits of having a cam online?

First and foremost...peace of mind. With a public cam you will have others watching while you rest, or work, or shop. We have a large online community where you can tell others about your animals and learn more about the birth experience, or help others to learn from your experiences. It's a strong family community where we look out for each other.

Private cams are also available, giving you the same peace of mind by being able to see your stock while you are away from home, but knowing that you alone will view them.

We have saved the lives of many mares and foals by catching a labor in progress while the owners were sleeping or away from home. Our viewers have seen mares begin to colic and alerted their owners. Cast mares and foals have been rescued because our viewers called the cam owner. These alerts have been priceless

Online cams can be used for so many reasons, other than foaling...use it for sick animals that need to be monitored, show off an animal for sale, watch weanlings as they adjust to their new environment or just watch your property away from home.

Mare Stare's hosting service is not limited to equine. We have llamas, alpacas, goats, kittens, puppies and even cow cams online. The possibilities are endless, and the advertising is overwhelming.

Our online forum receives over 18,000 hits per day, which equals over one million hits per month. Having a cam online has more than doubled the exposure to our farm owners and their websites/farms.

We would love to have you join our online family. Come visit us at www.marestare.com and see what you've been missing.



www.marestare.com

Heather Troglauer
Owner
803-466-0629
Heather@marestare.com

MHCGB MEMBERS WEB CAMS

Marestare.com/California.php
Marestare.com/supreamdream.php

Foaling

Please note these are personal experiences and therefore not professional veterinary advice. It is essential if there are any worries or difficulties, you must contact your vet immediately and not rely on just my personal experiences.

WARNING: this article contains some graphic pictures connected to foaling which some people may find offensive



This is a short illustrated guide to the ups and downs of the Birth of a Foal from some personal experiences.

Although there are a number of books on Broodmares and Foaling, I often get asked lots of last minute questions by panicking new owners of in foal mares as their due dates approach.

These books can be pretty intimidating as most go into "too much information", terrifying the first time foaling owners and leaving them with more questions than answers. So this page is a very basic guide with illustrations to outline the main things to look out for before and afterwards

It has to be said though, if in **ANY DOUBT** of impending trouble, **you must call your vet** and not just rely on my suggestions which are only set out here as a guide to ease a few "last days to last minute" wobbles!

It is only through hands on experience from watching and waiting for various mares of all sizes and types (the actual foaling process is the same for all mares large or small) that gives you the confidence not to panic.....well not hysterically at least.

That said, when a mare who is nearing her due date, after waiting so long, finally gives you the imminent indications that a new birthday is about to happen, the adrenalin does surge very high - the pulse rate quickening as she anxiously gets up and down and the first signs of the white of the sac that baby has lived in for 11 long months, appears under her tail.



When this sign of a new life appears on its potentially dangerous exit to the outside world and mum-to-be is pushing with all her might, it is literally a matter of minutes when things can go very right, or very wrong. Generally speaking it really does more often than not go to plan....so relax.

The foaling process from start to finish (if no problems on way out of the cervix and birth canal) is incredibly quick. This takes many people by surprise.

Although, yes, it is nature and all should be fine for them to get on with it and cope themselves, having waited so long, it is just soul destroying for the mare and you to lose the foal – or devastatingly worse, the mare as well, when you could have been there just to give a few small lifesaving things which I will suggest below.

The main fact is that if you have a mare looking as if she will definitely foal that night, she must be regularly checked through the night if you want to ensure the safety of mother and baby. To stay awake at half hourly intervals through the night is NOT an easy task I can assure you, even with the luxury of a small CCTV type camera to watch her undisturbed. It is your eyes with the matchsticks that get disturbed.



Most mares will wait to foal down in the quietest part of the night 2am to 5am. Lovely, just when a human will be at their most desperate need for the deepest sleep of the 24 hours.

It is much more helpful to know exact covering/conception dates for the mare. All the big Thoroughbred and Sport Horse studs have exact dates as they are scanned in foal too. But with miniature mares early scanning is risky, tricky and expensive, so we keep dates of when the mares were actually covered and then if they do not return in season, well that is good enough for us and also lacks unnecessary vet intervention.

A mare's gestation period is normally 330 to 350 days, but this is still a guideline and some mares are annual "10 month-ers" (300 days approx) and others hang on until nearly the full 12 months. One of our miniature mares (Lulu) hangs on and on with hard udder and all the signs, literally draining you watching her night and day for so long. Being a very small mare, this is even more of a worry.



"we even try serenading her into getting on with it!"

Sadly with Lulu she really did catch us out with her first foal. After weeks of watching and waiting, we decided to risk going riding. Fatal, came back to find her struggling to get the foal out. Couldn't believe it happened so quickly after all that constant observation, heartbreaking.

The general feeling is a filly foal gestation will always be shorter than a colt's (ladies first, naturally, or is that sexist now?) and certainly in my experience this does seem to be the case nearly all the time.



Twin pregnancies do occur, but rarely go to term and the mare tends to slip/abort them at around 7 to 9 months which is sad and frustrating for all. In early TB pregnancies, they will "pinch" a twin out when routine scanning to allow one foetus to grow normally.

This is common practice at Thoroughbred Stud Farms where many twin conceptions are discovered at the first scanning. Our own TB mare from five foals has had 3 twin pregnancies, all to Derby winners oddly enough. One of them naturally aborted after scanning. She was covered again by the stallion (Artificial Insemination is forbidden in the bloodstock world) and 16 days later scanned to discover another twin pregnancy. Unbelievable!

As the embryos were in different sacs, however harsh it may sound, one was successfully tweaked out allowing the remaining foetus to "cook" happily away for 11 months, but only then too tragically die during birth - and with it our dreams of a filly by such an outstanding racehorse. It is times like this you really want to give up.



For those who have been in the same position, they will share how the ups and downs of breeding can be so exciting or so excruciating. The main priority though has to be the health and well being of the mare, particularly as it is us who have put her in that position.

So as the long wait draws towards D-Day, or rather B-Day...some mares get very round even as early as the 4th or 5th month, some stay very small almost to the last few weeks. It is such a great help if you know your mares very well as they are all so different with little individual signs that you get used to with each foaling. Many of the mares can get SO vast it is a wonder how long they can hang on without going bang!



Ever expanding Mares lining up while we can only watch and wait.

It is important to keep careful watch and feel of the udder fullness and how hard it becomes.



Again, this is all so individual and I can still get caught out even now when you are convinced the mare has "a few more days at least". This is when udder has filled up big time, but is not hard enough to convince you birth is imminent.

It is generally a gradual process, udder filling to full bags from a month or more before - but it has been known with a maiden mare for udders to fill that night and baby pushed out when no-one is prepared....but for the sake of confidence! We must try and stick to general foaling rules...

This mares udder pictured here was taken 4 days before birth.

The main signs.....filling up/hardening of udder, teats more prominent, slackening of the vulva and tail set and general relaxed muscle tone around tail area.

Signs of ready milk/colostrums bursting out at the touch of the udder is still not a guaranteed "imminent" sign and you must resist pinching the udder too hard to see how much of the magic sticky colostrum is running freely. This is an amazing product of nature, essential for all the antibodies and the kick start to life the new baby so desperately needs.

The most wonderful sight to save endless nights of sleep for me is the buttery lumps of wax on the teats, They don't all get this, but when they do, you daren't even have a bath.....and that's

another story! In my experience, this sign is a virtual guarantee you are hours away from the mare foaling.

Same mare's udder about 3 hours before foaling.

In the natural habitat, a mare will foal in the dusky hours to lessen the chance of predators stealing their precious long awaited baby, hence why the actual pushing out process of the foal is very quick if all goes well.

In my opinion, there is no doubt they are better left to foal outside in a safely fenced, flat spacious field (no ditches or water though) and if the weather is fair. If foaling all goes to plan like it should in the "text book" you would wake in the morning and see new baby skipping around and protective mum grazing.

Birthing outside, they have more space to roll around, less chance of the foal getting wedged in a corner of the stable, and the new babies can get a foot hold on the ground as they struggle to get to their feet. Fresh air and space will encourage them to get going quicker and keep mum more on the ball.

I definitely find mothers panic more in a stable with a new foal so there is more chance of it getting bashed accidentally. It must be to do with their peripheral vision as in a stable the newborn can be just up and wobbling around the mare and for a split second, go out of her sight causing the mare to whip round in panic and send poor baby flying.

That said, it is very important to have a clean stable ready for the mare with a deep bedding of clean straw. I don't personally like shavings as they can get in their little damp eyes and up nostrils etc.

One of the other really main signs that seems to be a certain indicator is the mare starting to get very loose droppings, quite often an hour or two – maybe less - before foaling. As you get more convinced she may be starting to contract, feel for beginnings of sweat low down on chest and rising up the neck.

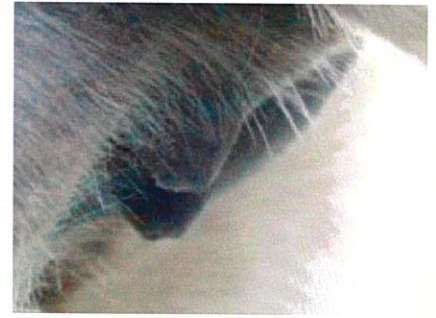
Once she starts her first stage of labour, this will be seen as circling, pawing the bedding, confused and leaning round looking at her back end, getting up and down. If you can get in and get a tail bandage on her then that is a great help having that out the way, but it is tricky as if you go in too early, you will disturb her and she may fret even more. Ideally you want her to be well into this stage of labour before approaching mare or they can "put it on hold" if interrupted.

One other less than helpful clue from them is that mares are amazingly quiet in labour, unlike cows or sheep who make a hell of a racket. They are just so desperate to quietly get on with it on their own which is why if you can leave her undisturbed it is better, as long as you are there hovering in case of a hitch.

When she is down and lying flat on her side, straining and pushing with her legs out straight, you should soon be able to see the white-ish bubble sac appear under her tail like a small balloon. It can have blood coming out with it, so don't be too alarmed **UNLESS** it is an actual red bag birth where the mare is pushing out the placenta/after birth before the foal. Time is of urgent essence here, and if you see this, you need **veterinary assistance immediately**, even if he/she can talk you through what to do over the phone.

As the mare continues to push and then sit up for a breather between contractions, she may well get up for few minutes and walk round ready to lie down again and start pushing. This is normal and helps her cope. As the pushing continues, the thick white sac should – god willing – be containing the 2 new baby fore legs and nose first.

As you can see from these pictures, this is almost what is happening here. The only slight problem with this presentation is the 2 legs were coming out either side of the head meaning much more strain on mare and foal.



In a perfect birth, one foreleg is slightly ahead of the other with the nose effectively just above the fetlock (this guide is in a mini, nose is higher up leg in a bigger horse). This is the text book position for the foal to be in to allow the comparatively huge shoulders to come through at the right angle.

It is so vital not to interfere if you can resist, but in this situation it helps the mare enormously to a swifter birth if you can just hold the legs steady and alter slightly the leg position downwards as she pushes to free up the shoulder coming along behind. This must be done completely in time with her contractions – **DO NOT** actually pull unless jammed, and **NEVER** pull if she is resting between contractions.

Be brave and hold on to keep in position while she takes a breather. It is a surprisingly very cold and clammy sac/bag by the time it has been poking out for a few minutes, my children still hate having to touch it!

The bag/sac the foal is born in is also another dangerous hurdle to the young one who so desperately needs to breathe as it hits the deck. It is unlikely that any breeder has not experienced the heart wrench to just miss the whole birth by literally minutes to find exhausted mum and the new baby warm and perfectly formed, but dead, suffocated by the bag itself.

This incredibly tough wonder of nature that is so vital to keep the growing baby alive and help its safe arrival into the world, can also be its killer. It **MUST** break round the foal's nose to allow air into the lungs. Nine times out of ten it will, but it is a lethal natural material if it gets stuck round the foals nose as it take in the first desperate gulps of air.

It is the most sickeningly useless feeling that after waiting so long and watching the mare 24/7 as her birth day approached, that you miss it by so little time. 3 years ago it happened to us.

The most exquisite dark palomino filly with the dishiest little head and fine bone china legs. Worst of all, she had thrashed her way out of the bag, even passed meconium /her first – and last - little poo. But a small piece of the bag was breathed in to her tiny little nostrils. I yelled in despair, scooped her up and tried swinging her from her dainty hind legs to let the lungs drain. Heart massage, anything. Ran down into the house with her to get hubby and children to keep massaging her in the long lost hope we could re-splutter her into life. Her tongue and gums were still pink, not disastrously blue, so hadn't lost all hope

I went back to put mum in a safe small paddock as knew she would run herself ragged. Back inside this perfect, still warm little baby was most definitely not going to come back to life. Truly depressing for us all.

But at least we've had more often than these low times some wonderfully healthy babies with trouble free births.

In the final stages of labour, the rest of the foal will be expelled with the final push and it is quite normal for the baby to lie for a few minutes with its back legs in mum as she lies still exhausted.

She will then look round proudly "chatting" to her new baby with the bag still over the rest of its body and back legs.

As mum gets up the cord that is still attached will "ping" and snap the connection. This will all look a bit scary as quite a bit of blood can spill from baby, but now, this point of life source for 11 long months is no longer required and mum will get on and lick her baby clean stimulating the foal to get up and drink.



Many breeders spray antiseptic type spray on the cord "stump" area, but I never have providing mum gets on a cleans the area and touchwood have had no problems by not spraying anything there – it is nature after all.

The next alarming sight to face us for the first time is the after birth/placenta which hangs from the mare for different degrees of time after foaling.

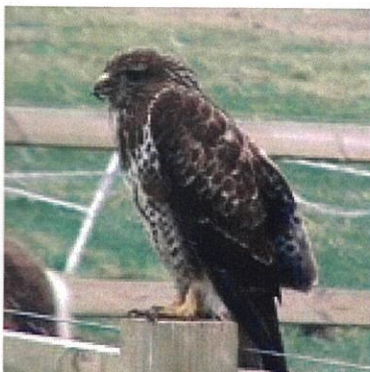
This becomes the final stage of labour as the mare starts contracting again to expel what is now waste. It is imperative that this is expelled in a complete state, as in - no bits left behind. This can happen if she treads on it and it gets torn away instead of pushed from the inside. Usually this amazing self cleansing process is trouble free, but she will go up and down again as if about to foal. It will eventually "plop" out all in one go from 10 minutes or so after foaling up to an hour or more.

This must never be pulled at and if proving a refusal to be expelled it needs a gentle weight tied to it. However ridiculous it may look, we have tied a rubber glove filled with water, or even an old slipper! It never seems to bother the mare, they are too busy concentrating on the foal.

Mares have been known to eat this once it has been expelled, quite amazing that this doesn't give them colic, but some of them feel compelled by instinct to chew/destroy the evidence.

If you can spread the afterbirth out on hard ground it is a good idea to piece it back together to check there are no other little holes as this can mean a few bits of tissue could be left in the mare.

It needs to be disposed of carefully as waste. I know people chuck it in the hedge but this can attract foxes and – in our case birds of prey as well! And it wouldn't take much for a fox to take a weak newly born foal if it was sniffing around foaling leftovers.



We are very lucky to have the daily sight of huge buzzards and kites circling and swooping over our fields. One was so big last year we thought it was an eagle, and although these are meant to be carrion birds, they can unnerve you if they get too bold and get so near the new borns.



The next stage of checking the foal's progress can also be the MOST exhausting. Ensuring it has had a good few first slurps of the vital colostrums in a miniature foal is so backbreaking hanging around helping it get to the right end of the mare! So much patience required, especially if the mare is fidgety or doesn't have much milk.

This picture shows the foal just up on unsteady feet, still wet.

This colostrum also acts as a laxative to make sure the toxic meconium is expelled from the newborn. You should shortly see the foal straining slightly and a sticky tar like puppy poo appearing. After this and seeing to the mare with a small warm bran mash and fresh warm water, and with the knowledge the foal has got the hang of suckling properly, only then can you relax enough to go back to bed.

I still set the alarm for an hour later to see if baby is still active. It is such a worrying sight to see the new foal flat out and slightly twitching, the mare blissfully unaware that there could be a problem.



We have had this quite a few times. Just when you think you are home and dry, the foal has not been drinking properly i.e. it looks and sounds like it has got to the mares udder successfully slurping, but in fact no milk has been swallowed and the foal rapidly goes down hill.

There is little option when it has got to a twitchy, floppy stage to intravenously re-hydrate it and/or stomach tube and feed it. Not an easy task even for the most experienced vet. The mini foals have such a tiny vein to find, the vets equate it to going back to their days saving guinea pigs and hamsters!

Our first foal last year we so nearly lost as was slightly premature (silky/thin coated) and mare didn't have much milk. We tried to feed it, but it was too weak to swallow. These situations are SO frustrating as for couple of hours the foal seems to have been feeding and skipping around the stable at midnight. Next thing you know it is 2.30am and its nearly died on you.

Taking Apricot to vets after having catheter inserted into her neck and bandaged in place.

So as you can see, breeding horses is not for the faint hearted.



Apricot at vets with a baby's woolly jumper on to keep her warm.

Some breeders look at it like "farming" and leave them to nature with an attitude of they either live or they die, but I simply cannot leave the mare in case she gets into trouble. We would be beside ourselves if we lost a mare, we adore them all.

But the main thing is in a lot of foaling situations if you are there watching, only a very minor adjustment on the journey to the outside world can lead to an easy happy ending rather than a tragic one.



**By kind permission
of Lindy Woodhouse
Of Golden Oak Stud**

Cornwall

KAY BERWICK

NAME OF STUD: TALKLAND STUD
ADDRESS: GOONEARL FARM, GOONEARL, SCORRIER, REDRUTH,
CORNWALL, TR16 5EB
TEL: 01209 820088 OR 07834729283
EMAIL: kay.berwick@btconnect.com
WEBSITE: www.talklandminiatures-goonearlfarm.com
NUMBER OF MINIATURES: 12
RESIDENT STALLIONS: TALKLANDS NAVAJO MAGIC ROUND-
ABOUT, KNELL OBVIOUSLY AFTER DARK, FAITH FARMS PRINCE
OF HEARTS.
BLOODLINES: AMHA, INCLUDE ALVADARS DOUBLE DESTINY,
MARTIN BOOZERS AFTER DARK, BREWER MAJOR DEALER/ORION
STAR/HUSSELER/SHADOW OAKS COCK ROBIN/CHAI NTY
SPECIALISING: SHOWING, DRIVING, BREEDING
LOCATION: SCORRIER nr TRURO, close to the A30

RONNIE JONES

ADDRESS: HOPE COTTAGE, ST AUSTELL STREET, SUMMER-
COURT, CORNWALL, TR8 5DR
TEL: 01872 510164
EMAIL: ronniejones@onetel.com
NUMBER OF MINIATURES: 2
RESIDENT STALLIONS: MULTI SUPREME CHAMPION
BROOMELLS SUNUP
& MULTI CHAMPION BRIJANAN BOBBY DAZZLER
BLOODLINES: BRITISH BRED
SPECIALITIES: SPOTTED MINIATURES
LOCATION: MID CORNWALL

KIM RICHARDS

NAME OF STUD: BIRCHWOOD UK
ADDRESS: LANDS FARM, WASHWAY, BODMIN, CORNWALL,
PL3 3AW
TEL: 01208 75726
EMAIL: kimrich2002@yahoo.com
WEBSITE: www.birchwooduk.com
RESIDENT STALLIONS: LA VISTA BRILLIANT REMARK (frame overo)
& SEAHORSE ORIONS PRICELESS (black pinto)
SPECIALITIES: American miniature horses in all colours with particular
attention to beautiful heads and Arabian type.

MESSERS J.W. MERRELL / T. WATTS

NAME OF STUD: TEGEN MINIATURES
ADDRESS: BRAESIDE, HEWAS WATER, ST AUSTELL, CORNWALL,
PL26 7JE
TEL: 01726 882520
EMAIL: john.merrell@tseco.net
NUMBER OF MINIATURES HORSES: 4
MINIATURE SHETLANDS: 15
RESIDENT STALLION: DONABI UK NAVAJO TARBET
BLOODLINES: AMERICAN MINIATURES, SHETLANDS, PYGMY
GOATS.
LOCATION: ST AUSTELL, CORNWALL

STUD DIRECTORY SOUTH WEST

Devon

KATHY PHILIPS

NAME OF STUD: RODSWORTHY UK
ADDRESS: RODSWORTHY FARMHOUSE, ASHMILL,
SOUTH MOLTON, NORTH DEVON, EX36 4QD
TEL: 01769 550444 /07795412844
EMAIL: rodsworthyuk@btinternet.com
WEBSITE: www.rodsworthyuk.com
RESIDENT STALLION: ERL VOLTAIRES HI VOLTAGE
BLOODLINES: PURE BRED AMERICAN MINIATURE
HORSES
SPECIALISING: PINTOS & DILUTES
LOCATION: Situated on the edge of Exmoor 20 miles from
junction 27

DAVID HODGE

NAME OF STUD: BLACKERTOR UK
ADDRESS: LOWER HALSTOCK FARM
OKEHAMPTON, DEVON, EX20 1QR
TEL: 01837 55402
EMAIL: david@blackertorstud.co.uk
WEBSITE: www.blackertorstud.co.uk
NUMBER OF MINIATURES: 20
RESIDENT STALLIONS: CIRCLE S DOUBLE EAGLE (silver
dapple overo)
BLACKERTOR UK ORIONS CALL ME APACHE (black
pinto)
JBR PRINCE CHARMING (silver dapple leopard spot)
BLACKERTOR UK QUICKSTEPS KING DRAGON (bay)
SPECIALISING: OVEROS, PINTOS, APPALOOSAS

MARLYN POLLARD

NAME OF STUD: CRANLEIGH STUD
ADDRESS: HEIFFERS, RACKENFORD, DEVON, EX16 8EW
TEL: 01884 881258
EMAIL: marlyn@heiffersorangehome.co.uk
NUMBER OF MINIATURES: 80
RESIDENT STALLIONS: C SALEM, C BRIAR, TOYHORSE
MACHIAVELLIAN +6 OTHERS
BLOODLINES: BRITISH, SPOTTED, FALABELLA, AMERI-
CAN, MINIATURE SHETLANDS
SPECIALISING: ALL COLOURS
LOCATION: 20 miles from junction 27 M5

Devon cont'd

FREIDERIKE ETESSAMI

NAME OF STUD: SOUTHDOWN FARM

ADDRESS: BRIXHAM, DEVON, TQ5 0AJ

TEL: 07743901976

EMAIL: michaeleaarcher38@yahoo.co.uk

WEBSITE: www.southdownfarm.co.uk

NUMBER OF MINIATURES: 11

RESIDENT STALLIONS: LIMELIGHTS INDIAN SUMMER

SPECIALITIES: PURE BRED FALABELLAS

LOCATION: 10 miles from Torquay

EILEEN YAXLEY

NAME OF STUD: DONABI UK

ADDRESS: HIGHER HUKLEY, BAMPTON, TIVERTON,
DEVON, EX06 9AE

TEL: 01398 331813

WEBSITE: www.donabiminiatures.com

NUMBER OF MINIATURES: 9

RESIDENT STALLION: UNO TOM THUMB

BLOODLINES: CARRYING THE MOST DESIRABLE NAMES
IN THE AMERICAN STUDBOOK, INCLUDING: L&D SCOUT,

GOLD MELODY BOY, WITTMACKS MICKEY MOUSE,

SIERRA DAWN UNO DE MAYO & ORION LIGHT VAN'T

HUTTENEST, FLYING W FARMS BLUE BOY

Somerset

ANNE HAWKE

NAME OF STUD: GLASSES FARM AMERICAN MINIATURE
HORSES

ADDRESS: GLASSES FARM, ROADWATER, WATCHET,
SOMERSET, TA23 0QH

TEL: 01984 641500

EMAIL: anniehawke@btinternet.com

WEBSITE: www.glassesfarmminiatures.com

NUMBER OF MINIATURES: 6

FUTURE RESIDENT STALLIONS: PRF SHOOTING STAR &
LM IDOLS ON THE PROWL

BLOODLINES: A BLEND OF LITTLE KING BUCKAROO,
GOLD MELODY BOY, TOGETHER WITH FIRST KNIGHTS
BILLY IDOL, SCOTT CREEK STANDING OVATION, KNELLS
BEYOND REALITY

SPECIALISING: AMERICAN MINIATURE HORSES OF ARA-
BIAN TYPE

LOCATION: half an hour from junction 25 M5, situated within
Exmoor National Park

CLAIRE CARDWELL AREA 8 REPRESENTATIVE

NAME OF STUD: CALUKA UK

ADDRESS: 10 SLADES CLOSE, STOGUMBER, TAUNTON,
SOMERSET, TA4 3TG

TEL: 01984 656934 07790 314910

EMAIL: calukauk@tiscali.co.uk

WEBSITE: <http://myweb.tiscali.co.uk/caluka>

NUMBER OF MINIATURES: 10

RESIDENT STALLIONS: WINDHAVEN LITTLE HEART-
BREAKER, BLACKERTOR UK ARROWS FOR VICTORY

BLOODLINES: BOND/ORION

SPECIALISING: ARABIAN TYPE WITH ADDED PINTO COL-
OUR

LOCATION: 14 miles from junction 25 of M5

Miniature Horse Studs of the South West



AREA 8 members of MHCGB in this directory invite you to visit the very beautiful west country to view some of the most successful breeding, showing and driven miniature horses in the country who carry the finest bloodlines, some studs have stock for sale and offer hospitality; we are in easy reach of Rail links, Airports & Channel ports for travel and hotels and B&B's are plentiful, but please do telephone first for an appointment.



EMMA GAWLER

NAME OF STUD: EMEENA UK

ADDRESS: 33 MANOR ROAD, MILBOURNE PORT,
DORSET, DT9 5BL

TEL: 01963 251165

EMAIL: emeena_uk@hotmail.co.uk

WEBSITE: www.emeenauk.co.uk

RESIDENT STALLION: BLACKERTOR UK QUICKSILVER

CLASSY BAY

BLOODLINES: AMERICAN



Breeding Stallion: Limelights Indian Summer

Reserve Supreme Champion Falabella at MHOYS 2007, fully licensed, 29", stud fee: £500

Watch out for his 2008 Offspring!



Southdown Farm

Breeders of Purebred Falabella Horses

Brixham/ Devon
TQ5 0AJ

Tel.: 07743 901 976
www.southdownfarm.co.uk
info@southdownfarm.co.uk



Breeding your Mare

If you have decided that your mare is good enough to breed from and that you want to breed a foal, assuming you do not own a stallion, how do you go about sending your mare to stud, and what should you expect?

Articles have been written before about the value of good brood mares and no animal should be bred from unless it is of good enough quality. If the mare has poor conformation or unsoundness that can be inherited, then I consider that on no account should it be bred from. The appearance or the phenotype of the mare is very important to me, along with considering her pedigree. The pedigree contains names of her parents and grandparents but unless you can inspect them or know of them, how can you decide whether they in turn were worthy to breed from or be bred to. Famous names in a pedigree are easier to gather facts and photographs of to hope than that certain qualities are likely to be passed on. But in a pedigree without known champions it is but a group of names that may or may not be accurate. I have owned some animals for example that were British Miniature registered from parents and grandparents that were British Miniature registered, only to later find that some of the Shetland prefixes and registration numbers were not shown on the documents. I also remember that the Late Lionel Hamilton-Renwick of the Birling Stud told me that he had sold a Champion Palomino Shetland stallion to America only to find that it had been re-registered as an American Miniature Horse and was winning in America. I don't know if this included a change of name but the point is made to emphasize the fact that a list of names on a pedigree means nothing if you cannot establish the accuracy and quality of animals behind it. As such I pay a lot of attention to the appearance of the mare and the assessment of her conformation.

Having looked at the mare I consider what I would like to breed from her in order to select a stallion that I would like to use. Is she quite heavy, is she short in the leg, is her head large or has she a short neck. These are important to consider so that I can select a stallion that may improve the shortcomings of the mare and produce the type I hope to get. It is always a lottery but by giving it a bit of consideration some potential disasters may be avoided.

In selecting a stallion I would visit him if I had not already seen him in order to evaluate him for type and conformation. Also it is a valuable exercise to see what his temperament is like. If you can visit then it may be an opportunity for you to see some of his off spring and discuss with the stallion owner what stock has been produced, what it has matured like and the type that the stallion produces from a variety of mares. In this way you can try to evaluate whether the stallion would be a good match for your mare. A stallion should be selected for overall good conformation and type not to try to find one that has the opposite extreme to your mare as I have heard some people say. By this I mean that if the mare has a weak sickle type hind leg do not look for a stallion with a very straight hind leg to compensate, they are both faults to be avoided. Some stallions are more prepotent than others and by this I mean that they produce consistent quality stock from a variety of mares. Whereas some beautiful stallions produce nothing of merit. The true value of a stallion is in what he produces.

Having selected your stallion and hopefully for the right reasons and not because he is just down the road what should you expect to do when sending the mare to stud? When clients book my stallions I clearly tell them the stud fee that would be payable and when that is to be paid, usually when the mare is collected from stud or confirmed in foal. There are various breeding terms such as No Foal No Fee, No Foal Free Return, and Live Foal Guarantee etc. If you are not certain what they mean then ask the stud owner exactly what he means by the terms he uses to avoid any misunderstanding at a later date. For example I offer free return if not in foal, but it is limited to that breeding year and the following year. Not at infinitum and not transferable to another mare.

I always insist that a visiting mare has been swabbed before visiting my stallion and has a certificate stating that it is free from venereal infection issued no later than fourteen days prior to being covered. As a stallion owner I have a duty of care to other mare owners and do not want my stallion to become infected and in turn infect other mares. Infections such as *Pseudomonas* are alarmingly common and it can be very difficult to cure and can be impossible in the stallion. If the stallion contracts it he can be out of action for at least that stud season and could infect other mares or indeed fail to get them pregnant as the mare's immune system would destroy the semen along with the contracted infection. In my opinion if a stallion owner does not insist on at least this you should question what standards they operate under and whether you risk sending your mare. Some other studs may also insist on EVH tests as well.

In addition I ask that the mare has up to date tetanus inoculations and has been wormed before arrival.

In addition to covering fees, you may be asked to pay a grooms fee which covers 'the cost of additional help at the time of covering. Also to pay keep charges whilst the mare is at stud. I have different charges for different types of keep, for example if the mare is just turned out at grass or whether she is to be stabled and kept in more show condition to continue her showing after she returns from stud. I also charge more for a mare with foal at foot rather than a barren or maiden mare to cover the additional supervision and help required.

Although a stud owner takes every care in looking after visiting mare I make clients understand that they are leaving the mare here at there own risk and that I cannot be liable for loss or injury. There are always risks when covering and inexplicable injuries do occur even when horses are turned out on their own in fields which have the best of fencing.

I always ask that the mare ideally be sent to me a few days before she is due to come into season. In this way I can tease her with the stallion daily to see when she comes into season and then try to cover her at her most receptive times in order to get her pregnant. My stallions cover visiting mares in hand to avoid injury as much as possible and to know exactly when and how often the mare is covered. In this way we have achieved 100% success rate for 2007, which included a mare that was only receptive to the stallion for a window of 12 hours.

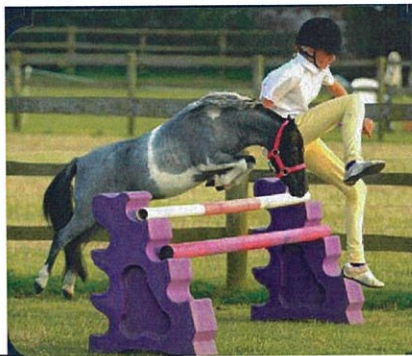
Some people take the mare home straight away after she has finished her season and then have her scanned at 16 days to see if she is in foal. Whereas, others leave the mare with us for our vets to scan her to establish if she is in foal or whether she will need to be recovered when she returns in season. The costs of any veterinary work are of course down to the owner.

Horses are not easy animals to breed and many matings fail to produce a foal. It is usually the mare that is at fault as a fertile stallion produces many millions of sperm but it is up to the mare to release a viable egg, retain the fertilized egg and carry the foal for approximately 11 months, not to mention any problems actually giving birth and diseases of the newborn foal. Couple this with the expense of sending a mare to stud and her keep for 11 months you can see that the exercise should not be undertaken lightly.

Having said all of that we have ten mares due to foal in 2008 to a variety of stallions and we are looking forward to them all with the same level of enthusiasm that we did when we bred our first back in 1979. It is a truly magical experience, time after time

Philip Matthews-Brown
Washbanks Stud

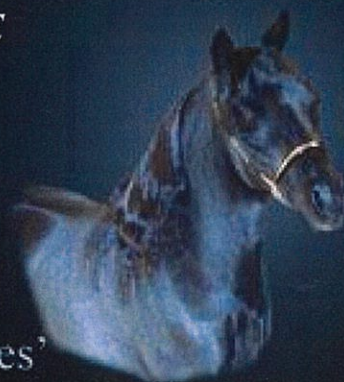
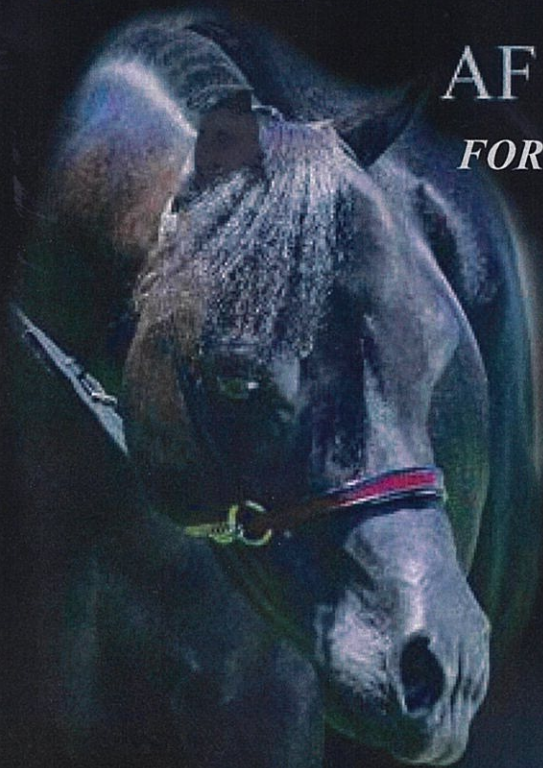
Members Photo Gallery



Jones' Mini-Whinnies

AF Black Majesty

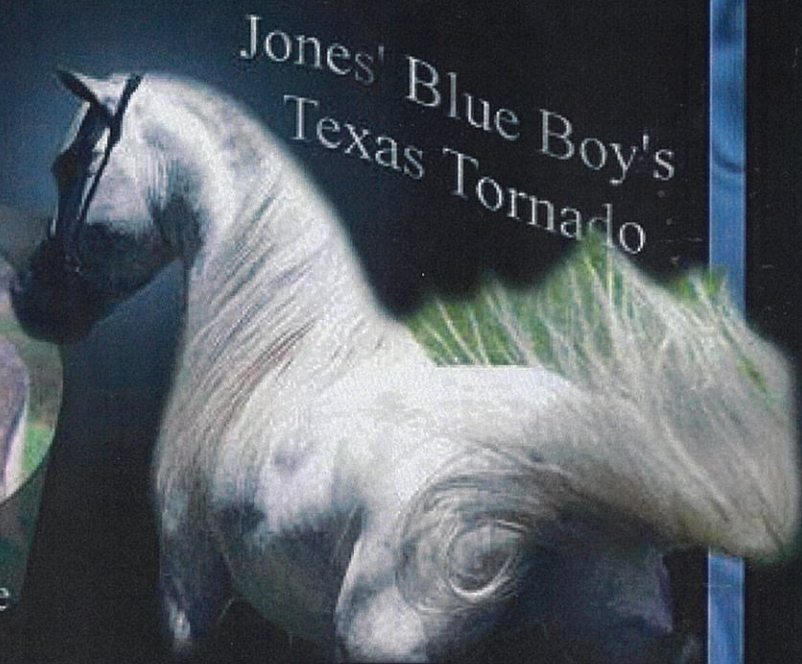
FOR SALE



Jones'
Heza Majestic Masterpiece
Manor Miniatures



Jones'
Majestic Reflection Of Blue
with Catherine Lee
Manor Miniatures



Jones' Blue Boy's
Texas Tornado

Elaine Jones & Nicole Jones DVM
109 Pullam Drive
West Middlesex, PA 16159
(724) 528-9716

jonesminis@hotmail.com

www.jonesminiwhinnies.com

Design By: Maggie Kalvick
Stallion Photo by: Eric McMillan

Feeding Miniature Horses.

As with all horses, it is important first to get a reasonable idea of the weight of your Miniature Horse in order accurately to assess feeding requirements. It also will enable accurate dosing for worms and other medications.

Most tables for feeding horses are based on an intake of 1.5% of the horse's body weight which is not always helpful as most horses will be happier and their digestive tract healthier, if they eat 2.5% of their body weight. Lactating mares with very young foals may even eat 3% of their body weight. Requirements for minerals, vitamins and so on are based on the amount per kilo of feed and assume the minimum intake of 1.5%.

The basis of all feeding should be forage, whether it is hay, grass or other forage such as flash dried grass, Lucerne or alternative high fibre feed such as unmolassed beet pulp. Lucerne is the English name for alfalfa.

Miniature Horses are as variable as any other breed or type in their size, character, temperament and the work expected of them, but where they differ is their faster maturing. They will reach their mature height at around 2 years of age, although muscling up, especially with stallions, may see their weight increasing slightly until they are 4 years old. Interestingly, there is evidence to suggest that although they reach mature height and weight quicker than other breeds or types, their teeth may actually be 6 months later in developing.

The following table is a guide to their weights and heights at different ages:

Age	Height inches	Weight kg	% of adult wt approx
6 months		40 – 50	50
Yearling	27 - 31	50 – 65	70
2-3 years	30 – 33	65 – 95	85
4 years	30 – 34	75 – 110	100

Above information courtesy Eileen Yaxley with thanks.

The horse should have a minimum of 1.5% of its weight when on a restricted diet for whatever reason, such as weight reduction; 2.5% should be regarded as normal and 3% may be needed under times of extreme demand such as set-back youngsters, early lactation, etc. Weights quoted are dry weights of feed and per day.

The following table gives these figures for the different weights of horses:

Size of horse, kg	1.5%	2.5%	3%
40	600g	1 kg	1.2 kg
50	750g	1.25	1.5
60	900g	1.5	1.8
70	1.05 kg	1.75	2.1
80	1.2	2	2.4
90	1.35	2.25	2.7
100	1.5	2.5	3
110	1.65	2.75	3.3
120	1.8	3	3.6
130	1.95	3.25	3.9
140	2.1	3.5	4.2
150	2.25	3.75	4.5
160	2.4	4	4.8
170	2.55	4.25	5.1
180	2.7	4.5	5.4
190	2.85	4.75	5.7
200	3	5	6

Estimate your Miniature Horse's requirements based on the weight it should be, not the weight it is especially if it is overweight. However, if your horse is overweight be very careful with feeding and NEVER withhold feed completely and ensure AT LEAST 1.5% of ideal weight is fed to avoid increasing the risk of hyperlipaemia or fatty liver disease. A combination of diet and exercise is best.

Reasonable hay or grazing will meet most if not all of your horse's requirements for maintenance, in other words, a healthy adult not doing any work in reasonable weather conditions. Hay/grazing/haylage are best from unfertilised, unimproved pastures and meadows. High proportions of agricultural grass such as ryegrass and use of artificial fertilisers will likely elevate the nutrient levels significantly leading to increased risk of obesity, laminitis, and joint disorders in youngstock.

Grazing is almost impossible to assess so ultimately, it is the responsibility of the horse keeper to monitor weight and adjust feed accordingly.

Where there are demands for increased nutrients, a proportion of the total intake will be given as "manger" feed. Some of these factors will be:

- Growth
- Lactation
- Gestation, especially the last trimester
- Work – riding, lunging, long reining, hand walking, horse walker, driving, showing, hand work such as "natural" horsemanship, liberty work, tricks etc.,
- Keeping warm in wet and/or windy cold weather. The smaller the horse the greater this effect as the surface area : body mass ratio increases and heat loss is more pronounced;
- Serving stallions;
- Parasites such as worms, lice etc.
- Old age

Disease.

Traditionally, these additional needs are met by providing increasing amounts of starchy, sugary mixed feeds or pellets. Even straight cereals are high in starch and can lead to digestive problems (colic, scours, ulcers), metabolic disorders (tying up, laminitis) and growth difficulties (epiphysitis, OCD,). In any case, when using starchy feeds (containing cereals and/or pulses) it is impossible to maintain health unless the level is kept below 50% of the total intake. Should forages be used there is vastly reduced risk of all the diseases mentioned and no limit to the proportions that can safely be fed. For these reasons, the balance of this article will focus on the feeding regime as put forward by Simple System Ltd., avoiding cereals, pulses, molasses, additives and preservatives.

If all the above points are accumulated to make a total that we can term work, then as the work increases so does the proportion of manger feed. The following table gives some examples of what may constitute work at different levels and the proportions of feed which may be appropriate. These will be Simple System Ltd feeds – which ones will be discussed later.

Level of work	% of feed in manger	% of feed as hay/grazing etc
No work: mature adults in good weather	0	100
Light work: 2 yr olds almost full grown; work most days, mainly walk, early gestation	10	90
Medium: long yearlings, daily work including trotting; showing;	20	80
Fairly hard: younger yearlings, serving stallions, regular driving, later gestation, wet/windy weather	30	70
Hard: end gestation; two or three displays/day; out-wintered	40	60
Very hard: early lactation; rigorous exercise; early weaned foals (-7.5 mths)	50	50
Extreme: winter foaling mares; orphaned foals; out wintered youngstock in severe conditions; dentally bereft veterans	60 – 70	30 - 40

We recommend that all stock have a forage balancer such as Total Eclipse, even if they are not working as it provides extra trace elements and useful levels of essential Omega 3 fatty acids. Mares in the third trimester and the first month of lactation should have Lunar Eclipse, as also should tense, anxious or overly hormonal horses. Amounts to use as follows:

Weight of horse kg	Total Eclipse, 5g/20 kg	Lunar Eclipse, 10g/25kg
50	12.5g	20g
70	17.5	28
90	22.5	36
110	27.5	44

Lucerne makes an ideal feed for most horses and especially breeding stock. It is high in vitamins, minerals (especially calcium and magnesium) and is an excellent source of good quality protein. It is low in natural sugars so will not cause fluctuations of blood sugar levels which may be associated with unruly behaviour, developmental joint problems, laminitis, tying up and obesity. It will tend to build muscle and support growth. Choose from:

Green Gold (expensive per Kg but very convenient),

LucieBix (less expensive, very palatable, requires soaking),

LucieNuts (most economical, need soaking, ideal for those with dental problems),

LucieCobs (made from sun dried Lucerne, so more Vit D; can be fed dry to adults; useful as "scatter bait")

Sun Dried Lucerne is a long fibre/hay version of the above, offering a good chew; ideal for brood mares and stallions requiring even more nutrients as it replaces some, or all, of the hay ration.

LucieStalks is a high fibre, low calorie chop made from Lucerne but with much of the leaf sieved out. Add bulk, eating time and fibre for good doers with sound teeth.

When a layer of fat is needed, or a little extra for work, **Purabeet** is a useful feed. It must be soaked, going to 5 times its original volume. Safe for all, but probably not enough vitamins for youngsters in their first winter, is easily digested and also suitable for those with dental problems.

Grass based feeds. Flash dried grass retains the characteristics of the fresh grass it was made from so we might exercise caution when feeding this to laminitics or any horse requiring very low levels of natural sugars.

Blue Bag Grass Pellets are made from summer type grass and specially selected for low sugar levels, although not generally as low as in our Lucerne feeds. High fibre and lower protein make it a suitable feed for those unable to be turned out or on restricted grazing through no fault, such as stallions, foaling mares, show stock etc.

Red Bag Grass Pellets are made from spring type grass and have very high levels of nutrients. These do need feeding with care but the experienced owner will soon realise that when they look at their horse and consider the best for it would be good spring grass, then this is the feed to go for! Early foaling mares, fast growing youngstock, weaned foals and heavily used stallions may benefit from this feed, but be aware it is high energy and NOT TO BE USED FOR LAMINITICS OF WHERE YOUNG OR INEXPERIENCED CHILDREN ARE HANDLING THE HORSES.

JustGrass is a chop version of Red Bag but not quite so "hot".

RuffStuff is a chop version of Blue Bag, made from Timothy grass and even higher in fibre.

Putting together a diet

From the charts calculate how much of each broad type of feed your horse needs. Then using the above information about what the different feeds offer, put together a diet based on one or more of the feeds.

When using Simple System Ltd feeds, there is no need to withdraw feed prior to work or withhold it after work. As it is digested in the hind gut and not the stomach, the usual rules about size and frequency of feeding do not apply. Soaking is recommended in order to restore the food to its natural hydrated state, to increase the volume of feed, to slow eating rate and encourage "grazing" rather than continuous eating. Feeds should last longer and the horse will have less time without feed.

All horses should have access to plain white salt, such as our Pure Salt Lick Bucket which is very convenient and economical. Remove the lid and handle and leave it in the paddock/stable/yard for the horses to help themselves as and when they feel the need.

Note: increased consumption of salt may indicate that the horse is at an increased risk of laminitis from other factors.

Fresh clean water should always be available, even though your horses will be eating a lot of water in their soaked feeds. If your Miniature Horse has any special requirements or issues affecting health, please get in touch for details of how our forages and complementary feeds may help.

© Simple System Ltd. Further information on our full range of feeds is available on our website

www.simplesystem.co.uk or from our help line, 01728 604 008 during usual office hours but excluding Bank Holidays and Christmas week. Order line and head office 01371 870 753.

NATIONAL CHAMPIONSHIP SHOW GALLERY 2007



PHOTOGRAPHS BY KIND
PERMISSION OF PATRICK AT
NATURAL EXPRESSIONS

PATRICK WILL BE IN
ATTENDANCE AT OUR-
NATIONAL SPRING
SHOW AT ARENA UK
ON 19TH APRIL



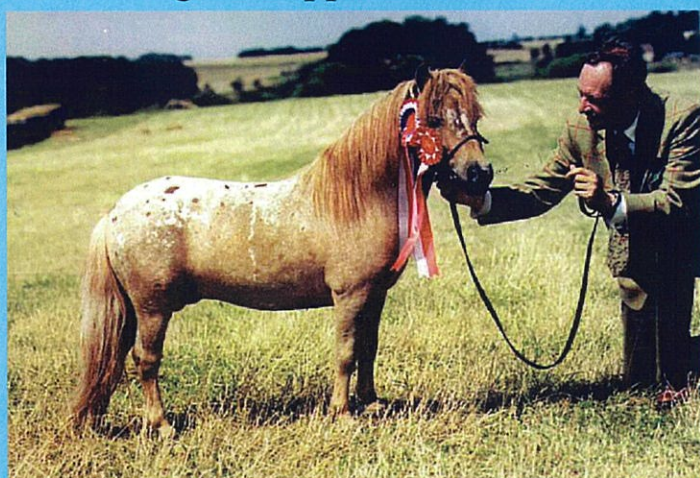
Cranleigh & Snowbella Miniatures

Some of our multi show champions

Toyhorse Machiavellian



Limelights Copperhead



C. Cobweb



C. Shari



Farthingwood Romeo



Romeo's Princess



Show quality stock for sale

Details:

Marlyn Pollard Tel: 01884 881258 (Devon)

Email: Marlyn@Heiffers.orangehome.co.uk Email: Snowbellaminiatures@btinternet.com

AREA NEWS AND REP CONTACT DETAILS

AREA 1 SCOTLAND

KELLY WILSON TEL 01698 791554 EMAIL hooves-and-paws@hotmail.co.uk

Nothing to report for Scotland I hope everyone is well and looking forward to the start of the 2008 Show Season.

AREA 2a NORTHUMBERLAND, ,DURHAM, N YORKS, E YORKS, W YORKS, S YORKS

JILL ROBINSON TEL.01642 534544 EMAIL jrnewclose@aol.com

Hope to see many of you at The National Spring Show in April.

AREA 2b CUMBRIA, LANCS., MANCHESTER, MERSEYSIDE, CHESHIRE

ANNE DEAKIN TEL. 01925 821444 EMAIL annedeakin@aol.com

I hope everyone in our area has the chance to to come to either the training seminar or show in the afternoon. If it is really successful then I would consider holding something on a larger scale later in the year. I hope everyone is fine and getting ready for the start of the showing season, lets hope this summer is better than last year.

AREA 3 DERBYSHIRE, STAFFS, LEICS, SHROPS, HEREFORDSHIRE, WORCS,WARWICKSHIRE, NORTHANTS

JANE PARKER TEL.. 01530 223594 EMAIL pp@conundrum.fsworld.co.uk

Hope to see you all at The Spring Show and The Morgan Horse Show which is now our Area 3 Show, With an American judge for the Refined and AMHA Classes.

AREA 4 WALES

JILL DUKE TEL. 01269 822033 EMAIL jill@dukespalominos.fsnet.co.uk

Hopefully the worst of the winter is over & we are looking forward to the first shows & our foals arriving.

Here in Wales we have lost one of our Area show (West Wales Show) that had lots of Mini classes, last year it was cancelled due to the ground flooded over night & they lost so much money they feel they cant cope again. However I'm delighted that the organisers at Sunny Bank EC have stepped in to save the day! The Show at Sunny Bank in May will now be our Area Show, please come along and support it, lots of chances to qualify for the Champs.

We have several NEW shows that are to putting on mini classes & if they are well supported will add more classes next year, so please do your best to support them if you want to keep them!

I wish you all happy showing & foaling, & better weather than last year.

Look on the MHCGB web site Events page to see the shows

AREA 5 LINCS, NOTTS,CAMBS, NORFOLK, SUFFOLK

PAT ENGLUND TEL. 01205 871970 EMAIL marieabeel@msn.com

Hi All,

Here we are ready to start a new season. I hope it proves successful for all.

I have been asked by the organisers of the Newark and Notts County Show, as area rep for the MHCGB, to arrange a display of Miniature Horses on Sat. 10th May. 10.45am. to 11.45am. at the showground, in preparation for classes next year. It has been up on the web site for a while and I'm very disappointed as the response has been dismal. As usual it has been the stalwarts who have agreed to give their time and support at present.

If you have missed or not been able to view the web site I urge you to support the promotion of the MHCGB and the Miniature Horse in general at this display on Sat.10th.May. 10-45 to 11-45.am.

I feel there is great apathy when members are asked to support displays, clinics, ect. How can we promote the MHCGB and the MINIATURE HORSE if the grass root people don't support them unless it is in competition.

The Newark and Notts County Show organisers are very keen to accommodate the Miniatures next year and I feel it would be a great disappointment to them if we only have a few animals there. It doesn't give a very good impression of the club or its members and it could lead them to think that the MHCGB is not a viable option for classes next year. This would be a pity as it is an easily accessible venue and they have created a ring with the Minis in mind.

Passes will be provided for free entry into the ground for trailers/lorries, along with a map of the layout to let you know where the ring and parking for the minis are. As the display is from 10-45. to 11-45.am. it leaves plenty of time for everyone to enjoy the rest of the show.

Please contact me by 25th March on 01205 871970 or my e-mail if you can lend your support. This is to enable an entry into the catalogue and to formulate a program. We need performance horses, Driving/jumping, diverse colours/types and we would appreciate a commentator. We would also like stud cards/leaflets for the public to take home, for those interested in possibly buying a miniature in future. This is a great opportunity not to be missed.

Looking forward to seeing everyone at the Spring Show.

AREA NEWS AND REP CONTACT DETAILS

AREA 6 HERTS, ESSEX, LONDON, KENT, WEST SUSSEX **SUE BRADSHAW TEL. 01277 626548 MOBILE: 07770665872**

Hello everyone!! I am the new rep for Area 6. I only started showing minis two years ago and I'm always talking about them (well actually I'm always talking!!) Most of you will have seen me at some stage with my rather loudly marked leopard spot gelding "Asils Spot On" or "Zog" to his friends. I was also member in the spotlight in the Autumn Magazine.

I am looking forward to the challenge and will try hard to represent MHCGB in the best way that I can. I live very near to Ingatestone Saddlery and need no excuse for a visit. If anyone fancies a chat about minis or anything at all horse related please give me a ring and we could meet up for a coffee.

Any suggestions or ideas for shows would be greatly appreciated. I would also love any members in my Area to make themselves know to me and let me know about your achievements no matter how small so that I can include you in my next write up.

I was looking at my very hairy minis yesterday trying to remember just how small they actually are once they are clipped, they must enjoy having time off and being hairy and muddy! My little filly looks as if she is wearing a balaclava with her beading black eyes peering out mischievously out at me! Its hard to imagine just how fine her little legs are.

I hope the weather is better this year than it was last year otherwise we all might as well get seahorses!!

I am looking forward to seeing everyone soon. Good luck for the 2008 season.

AREA 7 GLOU, OXFORDSHIRE, BUCKS, BEDS, BERKS, WILTS, HAMPS, SURREY, W SUSSEX **SHARON MATTHEWMAN TEL. 01264 398324 EMAIL shadel@ntlworld.com**

I hope you are all now starting to plan your shows for this season. Quite a lot of show dates are already available, with a lot of new shows on the horizon for this year by the look of it. New to our area is the Cadnam Festival of Colour. Having been in on the inauguration of this show a few years ago I can safely say that it has gone from strength to strength, attracting some of the best horses around to compete in Coloured, spotted and Palomino classes. Now as a society we have the opportunity to show off more of our minis here (we have supported them for many years now). This show is always fun and friendly, so we hope to see a lot of you there. Our first AMHA foal for the year has arrived, and, having given us a bit of a scare, she is now thriving and enjoying the brief spells of sunshine when they arrive between the downpours ! We wish you all well with your foalings this spring ' may all your troubles be little ones'.

AREA 8 CORNWALL, DEVON, SOMERSET, DORSET **CLARE CARDWELL TEL. 01984 656934 EMAIL calukauk@tiscali.co.uk**

Hi everyone,

My name is Clare Cardwell and I am delighted to be taking over as area representative for the South West. After many years of showing and breeding Arabians my interest has turned to American Miniature Horses and for the last four years I have been gathering a stud of this breed. Caluka UK is a small and select stud of these wonderful charismatic horses. Like many members I am looking forward to the forthcoming foaling season and would like to wish everyone good luck with their new arrivals.

Myself and the members here in the West Country would like to thank Eileen Yaxley for all her hard work over the past five years and for her help to the members of the MHCGB. Also thanks to her and John, especially for bring the wonderful Miniature Horse displays to the Devon County show in 2004 and 2005, which were a great success and will be sadly missed this year by spectators who loved it so much. We are still hoping in the future to get classes at the County show, along with the other organizations that Eileen approached in 2007.

Some good news for the start of the 2008 season is that we are looking forward to showing classes at Dunster Show on August 15th, with our new sponsor Connolly's Redmills Feeds. There are five classes in total with £70 prize money per class and prizes for the Champion and the judge for the day is Debbie Tyler Davies. So a very worthwhile dates to book in your calendar. Very many thanks to Ann Hawke of Glasses Farm Miniatures and Val Cridge for arranging this and getting this show as a qualifier for MHCGB. & IMHPS. Please do try and support these new shows in all areas, they need decent amount of entries to keep these classes going for the future. There are moves afoot for several other shows to include us and we hope to try and arrange an area show in the future, venues and dates are being explored. We have also been invited to produce a show and display at the Dunster County Fair in 2009, something we would love to achieve and work towards. If you have any ideas or have a Miniature with special talents please contact me, it would be a great opportunity to promote the club and show the general public just what these horses are capable of.

We have tried to bring our members and lapsed members together by compiling a Stud Directory which appears in this issue. It makes a lovely reference of what we have and where we are, if you are planning a visit to the West Country this makes a great reference and you can be sure of a warm welcome but please telephone studs to make an appointment first. Like wise if any of you have friends who have lapsed there membership, we would love them to rejoin us, please ask them to get in touch, the more members we have the stronger we become and the more we can do. We want to fly the flag in the West Country were we have some of the best bloodlines in the UK.

We hope to do an advertising feature on the South West in the next issue of the magazine, so please get in contact if you would like to be included. Achievements in the show ring or just stories about your Miniatures let me know as I would love to be able to show just what the members down here are out there doing. If you have any ideas for events in our area please do get in touch.

I would just like to finish this item by wishing all the members out there the best of luck for the forthcoming year and hope to meet as many of you all as possible at the season's shows.

The Stallions of Thousand Oaks

*Stallions and Mares of the
Finest Bloodlines*

Show Quality Conformation

*Foals and Several Bred
Mares Available*

Thousand Oaks
Sterling Silver
Photo By Washburn

Thousand Oaks Sirs
Lancelot

Thousand Oaks
Bolero Blue

Yashica Light
Vant Huttenest

Thousand Oaks Ranch

Kendall & Sharman Brown
Honey Grove, TX ~ (903) 378-3263
kkbrowns@wildblue.net
www.ThousandOaksRanch.com

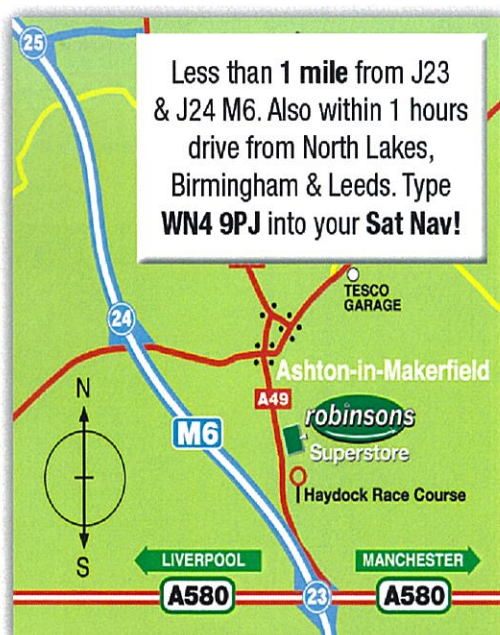
*Cross Country
Call Me Awesome*

HughesDesigns.com ~ Unless otherwise noted, all photos by: Liz McMillan

robinsons at Home with Horses

- **Horse & Rider**
Rugs, coats, grooming accessories & more!!
- **Dog & Owner**
Beds, collars, leads, coats and much more!!
- **Late Night Opening**
Thursday & Friday
- **Nosebag Café**

How to find us...



Opening Hours

Monday-Wednesday	10am-5.30pm
Thursday & Friday	10am-8.00pm
Saturday	9am-5.30pm
Sunday	11am-5.00pm

Address:

Robinsons Superstore, Warrington Road, Ashton-in-Makerfield, WN4 9PJ.

Contact us on: **0870 442 0275** or
Email: **superstore@robinsons-uk.com**

visit us online!



Click 'n' Flick
Catalogue



Visit our news
page

Bargains

Grab a Bargain!

eNews

Subscribe to
our eNews

www.robinsons-uk.com